

Datasheet for ABIN102260

Rabbit anti-Sheep IgG (Heavy & Light Chain) Antibody (Biotin) - Preadsorbed[Go to Product page](#)**2** Images

Overview

Quantity:	1 mg
Target:	IgG
Binding Specificity:	Heavy & Light Chain
Reactivity:	Sheep
Host:	Rabbit
Clonality:	Polyclonal
Conjugate:	Biotin
Application:	ELISA, Immunohistochemistry (IHC), Western Blotting (WB)

Product Details

Immunogen:	Immunogen: Sheep IgG whole molecule
Isotype:	IgG
Specificity:	IgG (H&L)
Cross-Reactivity:	Sheep (Ovine)
Characteristics:	Concentration Definition: by UV absorbance at 280 nm
Purification:	Preadsorption: Solid phase absorption
Labeling Ratio:	10-20

Target Details

Target:	IgG
---------	-----

Target Details

Abstract:	IgG Products
Target Type:	Antibody
Background:	<p>Synonyms: Rabbit Anti-Sheep IgG biotin Conjugated Antibody, Rabbit Anti-Sheep IgG Antibody biotin Conjugation</p> <p>Background: Secondary antibody conjugated to biotin is available in a variety of formats. Conjugated Secondary Antibody is Suitable for western blot, ELISA and immunohistochemistry as well as other antibody based assays requiring lot-to-lot consistency.</p>

Application Details

Application Notes:	<p>Immunohistochemistry Dilution: 1:1,000 - 1:5,000</p> <p>Application Note: When choosing a secondary antibody product, consideration must be given to species and immunoglobulin specificity, conjugate type, fragment and chain specificity, level of cross-reactivity, and host-species source and fragment</p> <p>ELISA Dilution: 1:20,000 - 1:100,000</p> <p>Western Blot Dilution: 1:2,000 - 1:10,000</p>
Comment:	When choosing a secondary antibody product, consideration must be given to species and immunoglobulin specificity, conjugate type, fragment and chain specificity, level of cross-reactivity, and host-species source and fragment
Restrictions:	For Research Use only

Handling

Format:	Lyophilized
Reconstitution:	<p>Reconstitution Volume: 1.0 mL</p> <p>Reconstitution Buffer: Restore with deionized water (or equivalent)</p>
Concentration:	1.0 mg/mL
Buffer:	<p>Buffer: 0.02 M Potassium Phosphate, 0.15 M Sodium Chloride, pH 7.2</p> <p>Stabilizer: 10 mg/mL Bovine Serum Albumin (BSA) - Immunoglobulin and Protease free</p> <p>Preservative: 0.01 % (w/v) Sodium Azide</p>
Preservative:	Sodium azide
Precaution of Use:	This product contains Sodium azide: a POISONOUS AND HAZARDOUS SUBSTANCE which should be handled by trained staff only.

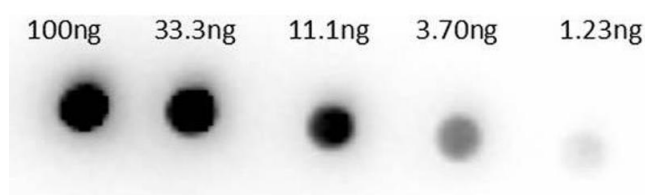
Handling

Handling Advice: Aliquot to Avoid repeated freezing and thawing.

Storage: RT, 4 °C, -20 °C

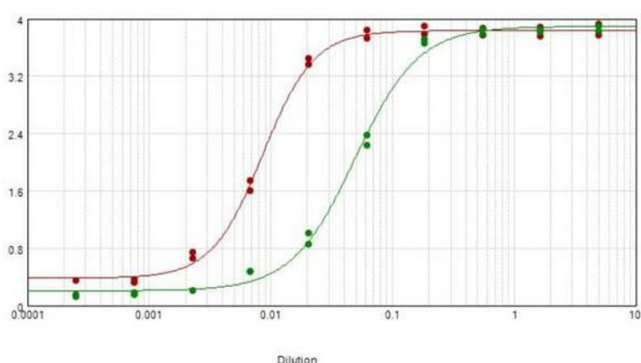
Expiry Date: 12 months

Images



Dot Blot

Image 1. Dot Bot of Rabbit Anti-Sheep IgG Biotin Conjugated Antibody Min X human serums. Lane 1: 100ng. Lane 2: 33.3ng. Lane 3: 11.1ng. Lane 4: 3.7ng. Lane 5: 1.23ng. Primary Antibody: Rb-anti-sheep Biotin at 1µg/mL. Secondary Antibody: Streptavidin HRP S000-03 at 1:40,000. Blocking Buffer: BlockOut for 30 min at RT.



ELISA

Image 2. ELISA results of purified Rabbit anti-Sheep IgG biotin conjugated antibody Min X human serum tested against purified Sheep IgG. Each well was coated in duplicate with 1.0 µg of sheep IgG (red line). The starting dilution of antibody was 5µg/ml and the X-axis represents the Log10 of a 3-fold dilution. This titration is a 4-parameter curve fit where the IC50 is defined as the titer of the antibody. Assay performed using Blocking buffer MB-060-1000, Streptavidin HRP conjugate 1:10, 000, and TMB-1000 substrate.