



[Go to Product page](#)

Datasheet for ABIN102333

Rabbit anti-Mouse IgG1 (Heavy Chain) Antibody - Preadsorbed

2 Images

Overview

Quantity:	1 mg
Target:	IgG1
Binding Specificity:	Heavy Chain
Reactivity:	Mouse
Host:	Rabbit
Clonality:	Polyclonal
Application:	ELISA, Western Blotting (WB), Immunohistochemistry (IHC)

Product Details

Immunogen:	Immunogen: Mouse IgG1 heavy chain
Isotype:	IgG
Specificity:	IgG1
Characteristics:	Concentration Definition: by UV absorbance at 280 nm
Purification:	Preadsorption: Solid phase absorption
Sterility:	Sterile filtered

Target Details

Target:	IgG1
Abstract:	IgG1 Products
Target Type:	Antibody

Target Details

Background:	<p>Synonyms: Rabbit Anti-Mouse IgG1 (Gamma 1 chain) Antibody, Rabbit Anti-Mouse IgG1 Antibody</p> <p>Background: Anti-Mouse IgG1 Antibody generated in rabbit detects reactivity to Mouse IgG1 (Gamma 1 chain). Secreted as part of the adaptive immune response by plasma B cells, immunoglobulin G constitutes 75 % of serum immunoglobulins. IgG1 chain constitutes 66 % of the IgG subclass and has a high affinity for binding to the Fc receptor of phagocytic cells.</p> <p>Secondary Antibodies are available in a variety of formats and conjugate types. When choosing a secondary antibody product, consideration must be given to species and immunoglobulin specificity, conjugate type, fragment and chain specificity, level of cross-reactivity, and host-species source and fragment composition.</p>
-------------	--

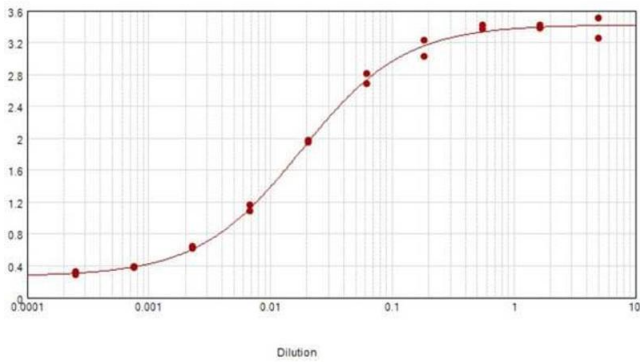
Application Details

Application Notes:	<p>Immunohistochemistry Dilution: 1:1,000 - 1:5,000</p> <p>Application Note: Mouse IgG1 secondary antibody is available in a variety of formats. Anti Mouse IgG1 secondary antibody is suitable for ELISA, Immunohistochemistry western blotting as well as other anti IgG1 antibody based assays.</p> <p>ELISA Dilution: 1:20,000 - 1:100,000</p> <p>Western Blot Dilution: 1:2,000 - 1:10,000</p>
--------------------	---

Restrictions:	For Research Use only
---------------	-----------------------

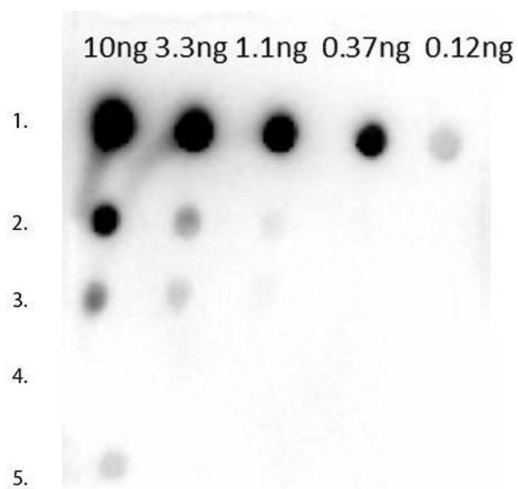
Handling

Format:	Liquid
Concentration:	1.0 mg/mL
Buffer:	<p>Buffer: 0.02 M Potassium Phosphate, 0.15 M Sodium Chloride, pH 7.2</p> <p>Stabilizer: None</p> <p>Preservative: 0.01 % (w/v) Sodium Azide</p>
Preservative:	Sodium azide
Precaution of Use:	This product contains Sodium azide: a POISONOUS AND HAZARDOUS SUBSTANCE which should be handled by trained staff only.
Storage:	4 °C, -20 °C
Expiry Date:	12 months



ELISA

Image 1. ELISA results of purified Rabbit anti-Mouse IgG1 tested against purified Mouse IgG1. Each well was coated in duplicate with 1.0 µg of Mouse IgG1. The starting dilution of antibody was 5µg/ml and the X-axis represents the Log10 of a 3-fold dilution. This titration is a 4-parameter curve fit where the IC50 is defined as the titer of the antibody. Assay performed using Blocking buffer MB-060-1000, Goat anti-Rabbit HRP 611-103-122, and TMB-1000 substrate.



Dot Blot

Image 2. Dot Blot of Rabbit Anti-Mouse IgG1 Antibody. Tested against dilutions 10ng, 3.3ng, 1.1ng, 0.37ng, 0.12ng. Lane 1: Mouse IgG1. Lane 2: Mouse IgG2a. Lane 3: Mouse IgG2b. Lane 4: Mouse IgG3. Lane 5: Mouse IgM. Primary Antibody: Rabbit anti-Mouse IgG1 at 1µg/mL for 1 hour at RT. Secondary Antibody: Goat anti-Rabbit HRP 611-103-122 at 1:40,000. Blocking Buffer: BlockOut for 30 min at RT.