



Datasheet for ABIN102341

Rabbit anti-Mouse IgG1 (Heavy Chain) Antibody (Texas Red (TR)) - Preadsorbed



[Go to Product page](#)

1 Image

1 Publication

Overview

Quantity:	1 mg
Target:	IgG1
Binding Specificity:	Heavy Chain
Reactivity:	Mouse
Host:	Rabbit
Clonality:	Polyclonal
Conjugate:	Texas Red (TR)
Application:	Flow Cytometry (FACS), FLISA, Fluorescence Microscopy (FM)

Product Details

Immunogen:	Immunogen: Mouse IgG1 heavy chain
Isotype:	IgG
Specificity:	IgG1
Characteristics:	Concentration Definition: by UV absorbance at 280 nm
Purification:	Preadsorption: Solid phase absorption
Labeling Ratio:	2.2

Target Details

Target: IgG1

Abstract: [IgG1 Products](#)

Target Details

Target Type:	Antibody
Background:	<p>Synonyms: Rabbit Anti-Mouse IgG1 (Gamma 1 chain) Antibody Texas Red™ Conjugation, Rabbit Anti-Mouse IgG1 Texas Red™ Conjugated Antibody</p> <p>Background: Anti-Mouse IgG1 Texas Red Antibody generated in rabbit detects reactivity to Mouse IgG1 (Gamma 1 chain). Secreted as part of the adaptive immune response by plasma B cells, immunoglobulin G constitutes 75 % of serum immunoglobulins. IgG1 chain constitutes 66 % of the IgG subclass and has a high affinity for binding to the Fc receptor of phagocytic cells. Secondary Antibodies are available in a variety of formats and conjugate types. When choosing a secondary antibody product, consideration must be given to species and immunoglobulin specificity, conjugate type, fragment and chain specificity, level of cross-reactivity, and host-species source and fragment composition.</p>

Application Details

Application Notes:	<p>Application Note: This product is designed for immunofluorescence microscopy, fluorescence based plate assays (FLISA) and fluorescent western blotting. This product is also suitable for multiplex analysis, including multicolor imaging, utilizing various commercial platforms.</p> <p>FLISA Dilution: 1:10,000 - 1:50,000</p> <p>Flow Cytometry Dilution: 1:500 - 1:2,500</p> <p>IF Microscopy Dilution: 1:1,000 - 1:5,000</p>
Comment:	Texas Red™ is a registered trademark of Molecular Probes Inc.
Restrictions:	For Research Use only

Handling

Format:	Lyophilized
Reconstitution:	<p>Reconstitution Volume: 1.0 mL</p> <p>Reconstitution Buffer: Restore with deionized water (or equivalent)</p>
Concentration:	1.0 mg/mL
Buffer:	<p>Buffer: 0.02 M Potassium Phosphate, 0.15 M Sodium Chloride, pH 7.2</p> <p>Stabilizer: 10 mg/mL Bovine Serum Albumin (BSA) - Immunoglobulin and Protease free</p> <p>Preservative: 0.01 % (w/v) Sodium Azide</p>
Preservative:	Sodium azide
Precaution of Use:	This product contains Sodium azide: a POISONOUS AND HAZARDOUS SUBSTANCE which

Handling

should be handled by trained staff only.

Handling Advice:

Product is photosensitive and should be protected from light.

Storage:

RT, 4 °C, -20 °C

Expiry Date:

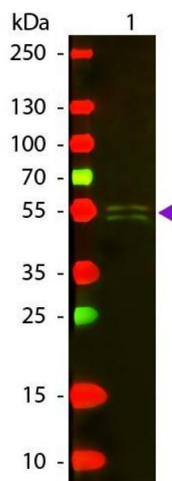
12 months

Publications

Product cited in:

Treise, Huber, Klein-Rodewald, Heinemeyer, Grassmann, Basler, Adler, Rathkolb, Helming, Andres, Klaften, Landbrecht, Wieland, Strom, McCoy, Macpherson, Wolf, Groettrup, Ollert, Neff, Gailus-Durner et al.: "Defective immuno- and thymoproteasome assembly causes severe immunodeficiency. ..." in: **Scientific reports**, Vol. 8, Issue 1, pp. 5975, (2018) ([PubMed](#)).

Images



Western Blotting

Image 1. Western blot of Texas conjugated Rabbit Anti-Mouse IgG1 (Gamma 1 chain) secondary antibody. Lane 1: Mouse IgG1. Lane 2: None. Load: 50 ng per lane. Primary antibody: None. Secondary antibody: Texas rabbit secondary antibody at 1:1,000 for 60 min at RT. Blocking: ABIN925618 for 30 min at RT. Predicted/Observed size: 55 kDa, 55 kDa for Mouse IgG1 (Gamma 1 chain). Other band(s): None.