

Datasheet for ABIN102373  
**Rabbit anti-Mouse IgG2a (Heavy Chain) Antibody -  
 Preadsorbed**



[Go to Product page](#)

2 Images

Overview

Quantity:	1 mg
Target:	IgG2a
Binding Specificity:	Heavy Chain
Reactivity:	Mouse
Host:	Rabbit
Clonality:	Polyclonal
Application:	ELISA, Immunohistochemistry (IHC), Western Blotting (WB)

Product Details

Immunogen:	Immunogen: Mouse IgG2a heavy chain
Isotype:	IgG
Specificity:	IgG2a
Cross-Reactivity:	Mouse (Murine)
Characteristics:	Anti-MOUSE IgG2a (Gamma 2a chain) (RABBIT) Antibody generated in rabbit detects specifically Mouse IgG2a heavy chain. Anti-Mouse IgG2a is ideal for investigators involved in Serum Protein Component research. Concentration Definition: by UV absorbance at 280 nm
Purification:	Preadsorption: Solid phase absorption
Sterility:	Sterile filtered

## Target Details

---

Target:	IgG2a
Abstract:	<a href="#">IgG2a Products</a>
Target Type:	Antibody
Background:	<p>Synonyms: Rabbit Anti-Mouse IgG2a Antibody, Mouse IgG2a Secondary Antibody, Rb-a-mouse IgG2a</p> <p>Background: Anti-MOUSE IgG2a (Gamma 2a chain) (RABBIT) Antibody generated in rabbit detects specifically Mouse IgG2a heavy chain. Anti-Mouse IgG2a is ideal for investigators involved in Serum Protein Component research.</p>

## Application Details

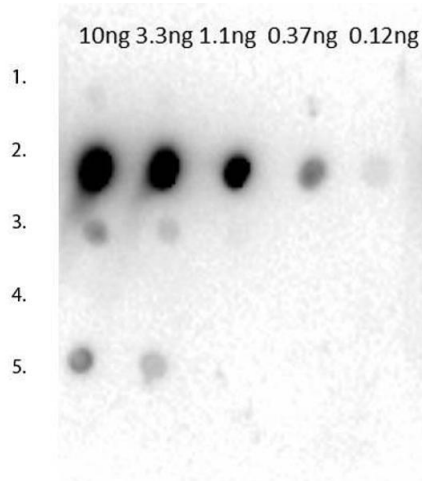
---

Application Notes:	<p>Immunohistochemistry Dilution: 1:2,000 - 1:10,000</p> <p>Application Note: Anti-MOUSE IgG2a (Gamma 2a chain) (RABBIT) Antibody is suitable for immunoblotting (western or dot blot), ELISA, and immunohistochemistry requiring extremely low background levels, lot-to-lot consistency, high titer and specificity.</p> <p>ELISA Dilution: 1:15,000 - 1:30,000</p> <p>Western Blot Dilution: 1:4,000 - 1:20,000</p> <p>Other Performance Data: IgM= 6.8 %</p>
Restrictions:	For Research Use only

## Handling

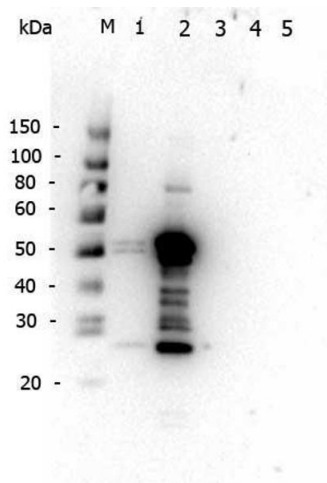
---

Format:	Liquid
Concentration:	1.1 mg/mL
Buffer:	<p>Buffer: 0.02 M Potassium Phosphate, 0.15 M Sodium Chloride, pH 7.2</p> <p>Stabilizer: None</p> <p>Preservative: 0.01 % (w/v) Sodium Azide</p>
Preservative:	Sodium azide
Precaution of Use:	This product contains Sodium azide: a POISONOUS AND HAZARDOUS SUBSTANCE which should be handled by trained staff only.
Storage:	4 °C, -20 °C
Expiry Date:	12 months



### Dot Blot

**Image 1.** Dot Blot of Rabbit Anti-Mouse IgG2a Antibody. Tested with dilutions 10ng, 3.3ng, 1.1ng, 0.37ng, 0.12ng. Lane 1: Mouse IgG1. Lane 2: Mouse IgG2a. Lane 3: Mouse IgGb. Lane 4: Mouse IgG3. Lane 5: Mouse IgM. Primary Antibody: Rabbit anti-Mouse IgG2a at 1µg/mL for 1 hour at RT. Secondary Antibody: Gt-anti-Rabbit HRP 611-103-122 at 1:40,000. Blocking Buffer: BlockOut for 30 min at RT.



### Western Blotting

**Image 2.** Western Blot of Rabbit anti-Mouse IgG2a antibody. Lane 1: Mouse IgG1. Lane 2: Mouse IgG2a. Lane 3: Mouse IgG2b. Lane 4: Mouse IgG3. Lane 5: Mouse IgM. Load: 5 ng per lane. Primary antibody: Mouse IgG2a antibody at 1 µg/mL for overnight at 4°C. Secondary antibody: Rabbit secondary antibody at 1:40,000 for 30 min at RT. Block: Blocking Buffer for Fluorescent Western Blotting for 30 min at RT. Predicted/Observed size: 50 kDa and 25 kDa, 50 kDa and 25 kDa for Mouse IgG2a. Other band(s): Weak reactivity for to Mouse IgG1.