



Datasheet for ABIN102374

Rabbit anti-Mouse IgG2a (Heavy Chain) Antibody (Alkaline Phosphatase (AP)) - Preadsorbed



[Go to Product page](#)

2 Images

Overview

Quantity:	1 mg
Target:	IgG2a
Binding Specificity:	Heavy Chain
Reactivity:	Mouse
Host:	Rabbit
Clonality:	Polyclonal
Conjugate:	Alkaline Phosphatase (AP)
Application:	ELISA, Immunohistochemistry (IHC), Western Blotting (WB)

Product Details

Immunogen:	Immunogen: Mouse IgG2a heavy chain
Isotype:	IgG
Specificity:	IgG2a
Characteristics:	Concentration Definition: by UV absorbance at 280 nm
Purification:	PreadSORPTION: Solid phase absorption
Sterility:	Sterile filtered

Target Details

Target:	IgG2a
Abstract:	IgG2a Products

Target Details

Target Type:	Antibody
Background:	<p>Synonyms: Rabbit Anti-Mouse IgG2a (gamma 2a chain) Antibody alkaline phosphatase Conjugated, Rabbit Anti-Mouse IgG2a Antibody alk phos Conjugation</p> <p>Background: Anti-Mouse IgG2a Alkaline Phosphatase antibody generated in rabbit detects reactivity to Mouse IgG2a (Gamma 2a chain). Secreted as part of the adaptive immune response by plasma B cells, immunoglobulin G constitutes 75 % of serum immunoglobulins. IgG2, the second largest of IgG isotypes, comprises almost 25 % of IgG and has a low affinity for binding to the Fc receptor of phagocytic cells. Secondary Antibodies are available in a variety of formats and conjugate types. When choosing a secondary antibody product, consideration must be given to species and immunoglobulin specificity, conjugate type, fragment and chain specificity, level of cross-reactivity, and host-species source and fragment composition.</p>

Application Details

Application Notes:	<p>Immunohistochemistry Dilution: 1:200 - 1:1,000</p> <p>Application Note: This product has been assayed against 1.0 µg of Mouse IgG in a standard capture ELISA using pNPP p-nitrophenyl phosphate code # NPP-10 as a substrate for 30 minutes at room temperature. A working dilution of 1:1,000 to 1:5,000 is suggested for this product.</p> <p>ELISA Dilution: 1:2,000 - 1:10,000</p> <p>Western Blot Dilution: 1:500 - 1:2,500</p>
--------------------	--

Restrictions:	For Research Use only
---------------	-----------------------

Handling

Format:	Liquid
Concentration:	1.0 mg/mL
Buffer:	<p>Buffer: 0.05 M Tris Chloride, 0.15M Sodium Chloride, 0.001M Magnesium Chloride, 0.0001M Zinc Chloride, 50 % (v/v) Glycerol, pH 8.0</p> <p>Stabilizer: 10 mg/mL Bovine Serum Albumin (BSA) - Immunoglobulin and Protease free</p> <p>Preservative: 0.1 % (w/v) Sodium Azide</p>
Preservative:	Sodium azide
Precaution of Use:	This product contains Sodium azide: a POISONOUS AND HAZARDOUS SUBSTANCE which should be handled by trained staff only.

Handling

Handling Advice: **Do not freeze!** Freezing alkaline phosphatase conjugates will result in a substantial loss of enzymatic activity.

Do not add Sodium azide.

Dilute only prior to immediate use

Each reagent is stable for the period shown on the bottle label if stored as directed.

Storage: 4 °C

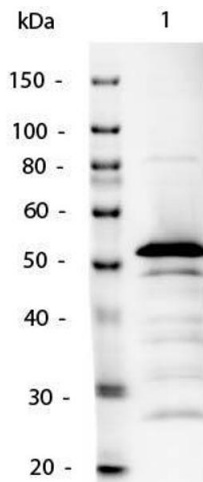
Expiry Date: 12 months

Images



Dot Blot

Image 1. Dot Blot of Mouse IgG2a Antibody Alkaline Phosphatase Conjugated. Antigen: Mouse IgG2a Load: Lane 1 - 200ng Lane 2 - 66.7ng Lane 3 - 22.2ng Lane 4 - 7.4 Lane 2.5ng Primary antibody: none Secondary antibody: Mouse IgG2a Antibody Alkaline Phosphatase Conjugated at 1:1,000 for 60 min at RT. Block: ABIN925618 for 60 min at RT Reaction visualized using alkaline phosphatase substrate for 30 seconds at RT.



Western Blotting

Image 2. Western Blot of Mouse IgG2a Antibody Alkaline Phosphatase Conjugated. Lane 1: Mouse IgG2a. Lane 2: none. Load: 50ng per lane. Primary antibody: none. Secondary antibody: Mouse IgG2a Antibody Alkaline Phosphatase Conjugated at 1:1,000 o/n at 4°C. Block: ABIN925618 for 30 min at RT. Reaction visualized with alkaline phosphatase substrate for 30 seconds at RT. Predicted/Observed size: 55kDa for Mouse IgG2a.