

Datasheet for ABIN102376

Rabbit anti-Mouse IgG2a (Heavy Chain) Antibody (FITC) - Preadsorbed



[Go to Product page](#)

2 Images

Overview

Quantity:	1 mg
Target:	IgG2a
Binding Specificity:	Heavy Chain
Reactivity:	Mouse
Host:	Rabbit
Clonality:	Polyclonal
Conjugate:	FITC
Application:	Flow Cytometry (FACS), FLISA, Fluorescence Microscopy (FM)

Product Details

Immunogen:	Immunogen: Mouse IgG2a heavy chain
Isotype:	IgG
Specificity:	IgG2a
Characteristics:	Concentration Definition: by UV absorbance at 280 nm
Purification:	Preadsorption: immunoaffinity chromatography using Mouse IgG2a coupled to agarose beads
Labeling Ratio:	3.7

Target Details

Target:	IgG2a
Abstract:	IgG2a Products

Target Details

Target Type:	Antibody
Background:	<p>Synonyms: Rabbit Anti-Mouse IgG2a (gamma 2a chain) Antibody fluorescein Conjugated, Rabbit Anti-Mouse IgG2a Antibody FITC Conjugation</p> <p>Background: Anti-Mouse IgG2a Fluorescein Antibody generated in rabbit detects reactivity to Mouse IgG2a (Gamma 2a chain). Secreted as part of the adaptive immune response by plasma B cells, immunoglobulin G constitutes 75 % of serum immunoglobulins. IgG2, the second largest of IgG isotypes, comprises almost 25 % of IgG and has a low affinity for binding to the Fc receptor of phagocytic cells. Secondary Antibodies are available in a variety of formats and conjugate types. When choosing a secondary antibody product, consideration must be given to species and immunoglobulin specificity, conjugate type, fragment and chain specificity, level of cross-reactivity, and host-species source and fragment composition.</p>

Application Details

Application Notes:	<p>Application Note: This product is designed for immunofluorescence microscopy, fluorescence based plate assays (FLISA) and fluorescent western blotting. This product is also suitable for multiplex analysis, including multicolor imaging, utilizing various commercial platforms.</p> <p>FLISA Dilution: 1:10,000 - 1:50,000</p> <p>Flow Cytometry Dilution: 1:500 - 1:2,500</p> <p>IF Microscopy Dilution: 1:1,000 - 1:5,000</p>
Comment:	Excitation/Emission wavelength: 494 nm/514 nm
Restrictions:	For Research Use only

Handling

Format:	Lyophilized
Reconstitution:	<p>Reconstitution Volume: 1.0 mL</p> <p>Reconstitution Buffer: Restore with deionized water (or equivalent)</p>
Concentration:	1.0 mg/mL
Buffer:	<p>Buffer: 0.02 M Potassium Phosphate, 0.15 M Sodium Chloride, pH 7.2</p> <p>Stabilizer: 10 mg/mL Bovine Serum Albumin (BSA) - Immunoglobulin and Protease free</p> <p>Preservative: 0.01 % (w/v) Sodium Azide</p>
Preservative:	Sodium azide
Precaution of Use:	This product contains Sodium azide: a POISONOUS AND HAZARDOUS SUBSTANCE which

Handling

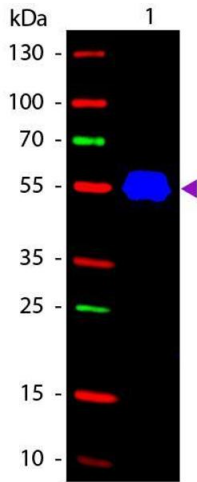
should be handled by trained staff only.

Handling Advice: Product is photosensitive and should be protected from light.

Storage: RT, 4 °C, -20 °C

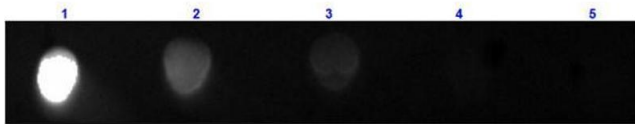
Expiry Date: 12 months

Images



Western Blotting

Image 1. Western blot of Fluorescein conjugated Rabbit Anti-Mouse IgG2a (Gamma 2a chain) secondary antibody. Lane 1: Mouse IgG2a. Lane 2: None. Load: 50 ng per lane. Primary antibody: None. Secondary antibody: Fluorescein rabbit secondary antibody at 1:1,000 for 60 min at RT. Blocking: ABIN925618 for 30 min at RT. Predicted/Observed size: 55 kDa, 55 kDa for Mouse IgG2a (Gamma 2a chain). Other band(s): None.



Dot Blot

Image 2. Dot Blot results of Rabbit Anti-Mouse IgG2a Antibody Fluorescein Conjugated. Dots are Mouse IgG2a at (1) 100ng, (2) 33.3ng, (3) 11.1ng, (4) 3.70ng, (5) 1.23ng. Blocking: ABIN925618 for 30 min at RT. Primary Antibody: Rabbit Anti-Mouse IgG2a FITC at 1µg/mL for 1hr at RT. Secondary Antibody: none. Imaged with BioRad ChemiDoc, FITC filter.