



[Go to Product page](#)

Datasheet for ABIN102563

## Goat anti-Chicken IgM Antibody - Preadsorbed

### 2 Images

#### Overview

Quantity:	1 mg
Target:	IgM
Reactivity:	Chicken
Host:	Goat
Clonality:	Polyclonal
Application:	ELISA, Immunohistochemistry (IHC), Western Blotting (WB)

#### Product Details

Immunogen:	Immunogen: Chicken IgM whole molecule
Isotype:	IgG
Specificity:	IgM $\mu$ chain
Characteristics:	Concentration Definition: by UV absorbance at 280 nm
Purification:	Preadsorption: Solid phase absorption
Sterility:	Sterile filtered

#### Target Details

Target:	IgM
Abstract:	<a href="#">IgM Products</a>
Target Type:	Antibody
Background:	Synonyms: goat anti-Chicken IgM (mu chain) Antibody, goat anti-Chicken IgM mu chain

## Target Details

---

### Antibody

Background: Anti-Chicken IgM antibody specifically detects chicken IgM. Immunoglobulin M is the largest antibody isotype and the first to be secreted against an initial exposure to antigen. IgM is predominantly produced in the spleen. Formed from covalently linking 5 immunoglobulins together, the approximate molecular weight of IgM is 900 kDa and possesses 10 binding sites (though due to the size of most antigens, not all sites are capable of binding at once). Due to this large size, IgM is typically isolated to the serum. Anti-Chicken IgM antibody is ideal for investigators in Immunology, Microbiology, and Cell Biology.

## Application Details

---

Application Notes: Immunohistochemistry Dilution: 1:1,000 - 1:5,000  
Application Note: Anti-Chicken IgM antibody is suitable for ELISA, western blot, and immunohistochemistry, as well as other assays requiring lot-to-lot consistency.  
ELISA Dilution: 1:20,000 - 1:100,000  
Western Blot Dilution: 1:2,000 - 1:10,000

Restrictions: For Research Use only

## Handling

---

Format: Liquid

Concentration: 1.0 mg/mL

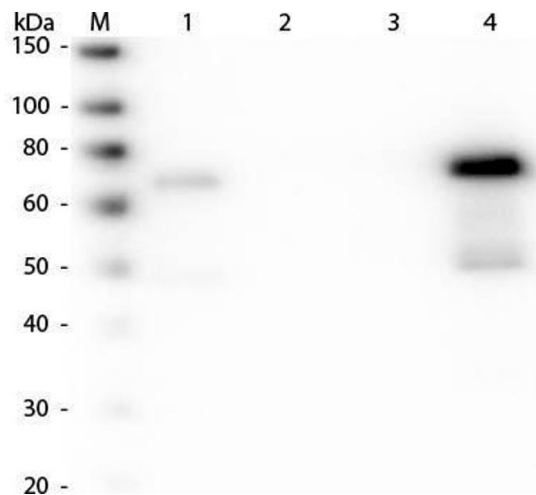
Buffer: Buffer: 0.02 M Potassium Phosphate, 0.15 M Sodium Chloride, pH 7.2  
Stabilizer: None  
Preservative: 0.01 % (w/v) Sodium Azide

Preservative: Sodium azide

Precaution of Use: This product contains Sodium azide: a POISONOUS AND HAZARDOUS SUBSTANCE which should be handled by trained staff only.

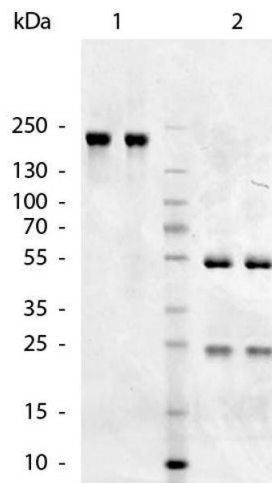
Storage: 4 °C, -20 °C

Expiry Date: 12 months



### Western Blotting

**Image 1.** Western Blot of Anti-Chicken IgM (mu chain) (GOAT) Antibody Peroxidase Conjugated . Lane M: 3 µl Molecular Ladder. Lane 1: Chicken IgG whole molecule . Lane 2: Chicken IgG F(c) Fragment . Lane 3: Chicken IgG F(ab) Fragment . Lane 4: Chicken IgM Whole Molecule . All samples were reduced. Load: 50 ng per lane. Block: ABIN925618 for 30 min at RT. Primary Antibody: Anti-Chicken IgM (mu chain) (GOAT) Antibody Peroxidase Conjugated 1:30,000 for 60 min at RT. Predicted/Obsevered Size: 25 and 72 kDa for Chicken IgG, 25 kDa for F(c) and Fab, 75 kDa for IgM. Chicken F(c) migrates slightly higher.



### SDS-PAGE

**Image 2.** SDS-Page of Goat anti-Chicken IgM (Mu Chain) antibody. Lane 1: Gt-a-Chicken IgM Antibody - Non-Reduced. Lane 2: Gt-a-Chicken IgM Antibody - Reduced. Load: 1.0 µg per lane. Predicted/Observed size: 50 kDa, 25 kDa for Reduced - Goat IgG. Other band(s): none.