

Datasheet for ABIN102624

**Goat anti-Human IgM (Heavy & Light Chain) Antibody -
Preadsorbed**[Go to Product page](#)**1** Image**1** Publication

Overview

Quantity:	1 mg
Target:	IgM
Binding Specificity:	Heavy & Light Chain
Reactivity:	Human
Host:	Goat
Clonality:	Polyclonal
Application:	ELISA, Immunohistochemistry (IHC), Western Blotting (WB)

Product Details

Immunogen:	Immunogen: Human IgM whole molecule Immunogen Type: Native Protein
Isotype:	IgG
Specificity:	IgM μ chain
Cross-Reactivity:	Human
Characteristics:	Anti-Mouse IgG3 heavy chain antibody generated in rabbit detects specifically Mouse IgG3 heavy chain. This secondary antibody anti-Mouse is ideal for investigators who routinely perform titration assays, western-blot, immunoprecipitation and more generally immunoassays. Concentration Definition: by UV absorbance at 280 nm
Purification:	Preadsorption: Solid phase absorption
Sterility:	Sterile filtered

Target Details

Target:	IgM
Alternative Name:	IgM mu (IgM Products)
Target Type:	Antibody
Background:	<p>Synonyms: goat anti-Human IgM mu chain Antibody, Gt-a-Human IgM, Human IgM Antibody in Goat, Human Secondary Antibody</p> <p>Background: Anti-Human IgM (mu heavy chain) generated in goat detects specifically Human IgM mu heavy chain. Immunoglobulin M is the largest antibody isotype and the first to be secreted against an initial exposure to antigen. IgM is predominantly produced in the spleen. Formed from covalently linking 5 immunoglobulins together. Anti-Human IgM mu chain antibody is ideal for investigators in Immunology, Microbiology, and Cell Biology.</p>

Application Details

Application Notes:	<p>Immunohistochemistry Dilution: 1:1,000 - 1:5,000</p> <p>Application Note: Anti-Human IgM mu heavy chain is suitable for use in immunoelectrophoresis, western-blot, competitive western-blot, ELISA and competitive ELISA assays. Specific conditions for reactivity and signal detection should be optimized by the end user.</p> <p>ELISA Dilution: 1:10,000 - 1:50,000</p> <p>Western Blot Dilution: 1:1,000 - 1:5,000</p>
Restrictions:	For Research Use only

Handling

Format:	Liquid
Concentration:	1.1 mg/mL
Buffer:	<p>Buffer: 0.02 M Potassium Phosphate, 0.15 M Sodium Chloride, pH 7.2</p> <p>Stabilizer: None</p> <p>Preservative: 0.01 % (w/v) Sodium Azide</p>
Preservative:	Sodium azide
Precaution of Use:	This product contains Sodium azide: a POISONOUS AND HAZARDOUS SUBSTANCE which should be handled by trained staff only.
Storage:	4 °C, -20 °C

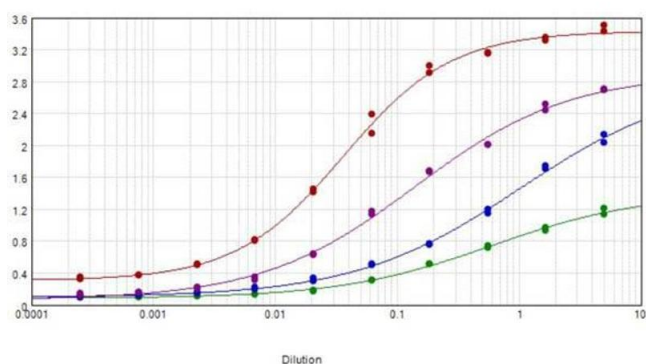
Handling

Expiry Date: 12 months

Publications

Product cited in: Yang, Jacobs, McCallen, Moore, Huckaby, Edelstein, Lai: "Analysis of Pre-existing IgG and IgM Antibodies against Polyethylene Glycol (PEG) in the General Population." in: **Analytical chemistry**, Vol. 88, Issue 23, pp. 11804-11812, (2018) ([PubMed](#)).

Images



ELISA

Image 1. ELISA results of purified Goat anti-Human IgM antibody tested against purified human IgM, IgG Fab, IgG Fc, IgG Fab2. Each well was coated in duplicate with 1.0 µg of "antigen". The starting dilution of antibody was 5µg/ml and the X-axis represents the Log10 of a 3-fold dilution. This titration is a 4-parameter curve fit where the IC50 is defined as the titer of the antibody. Assay performed using Blocking buffer MB-060-1000, Donkey-anti-Goat IgG HRP conjugate 1:12,000, and TMB-1000 substrate.