



Datasheet for ABIN102625

Goat anti-Human IgM (Heavy & Light Chain) Antibody (Alkaline Phosphatase (AP)) - Preadsorbed



[Go to Product page](#)

1 Image

Overview

Quantity:	1 mg
Target:	IgM
Binding Specificity:	Heavy & Light Chain
Reactivity:	Human
Host:	Goat
Clonality:	Polyclonal
Conjugate:	Alkaline Phosphatase (AP)
Application:	ELISA, Immunohistochemistry (IHC), Western Blotting (WB)

Product Details

Immunogen:	Immunogen: Human IgM whole molecule Immunogen Type: Native Protein
Isotype:	IgG
Specificity:	IgM μ chain
Cross-Reactivity:	Human
Characteristics:	Anti-Human IgM mu heavy chain antibody generated in goat detects specifically Human IgM mu heavy chain. This secondary antibody anti-Human is ideal for investigators who routinely perform ELISA, Sandwich ELISA, titration assays, western-blot, immunoprecipitation and more generally immunoassays. Concentration Definition: by UV absorbance at 280 nm
Purification:	PreadSORption: Solid phase absorption

Product Details

Sterility: Sterile filtered

Target Details

Target: IgM

Abstract: [IgM Products](#)

Target Type: Antibody

Background: Synonyms: goat anti-Human IgM mu heavy chain Antibody, Gt-a-Human IgM mu heavy chain, Human IgM mu heavy chain Antibody in Goat, Human IgM mu heavy chain Secondary Antibody
Background: Anti-Human IgM (mu heavy chain) Alkaline Phosphatase generated in goat detects specifically Human IgM mu heavy chain. Immunoglobulin M is the largest antibody isotype and the first to be secreted against an initial exposure to antigen. IgM is predominantly produced in the spleen. Formed from covalently linking 5 immunoglobulins together. Anti-Human IgM mu chain antibody is ideal for investigators in Immunology, Microbiology, and Cell Biology.

Application Details

Application Notes: Immunohistochemistry Dilution: 1:200 - 1:1,000
Application Note: Anti-Human IgM (mu heavy chain) is suitable for immunoblotting (western or dot blot), ELISA, immunoelectron microscopy and immunohistochemistry as well as other antibody based enzymatic assays requiring lot-to-lot consistency.
ELISA Dilution: 1:2,000 - 1:10,000
Western Blot Dilution: 1:500 - 1:2,500

Restrictions: For Research Use only

Handling

Format: Liquid

Concentration: 1.0 mg/mL

Buffer: 0.05 M Tris Chloride, 0.15M Sodium Chloride, 0.001M Magnesium Chloride, 0.0001M Zinc Chloride, 50 % (v/v) Glycerol, pH 8.0
Stabilizer: 10 mg/mL Bovine Serum Albumin (BSA) - Immunoglobulin and Protease free
Preservative: 0.01 % (w/v) Sodium Azide

Preservative: Sodium azide

Precaution of Use: This product contains Sodium azide: a POISONOUS AND HAZARDOUS SUBSTANCE which

Handling

should be handled by trained staff only.

Handling Advice:

Do not freeze! Freezing alkaline phosphatase conjugates will result in a substantial loss of enzymatic activity.

Do not add Sodium azide.

Dilute only prior to immediate use

Each reagent is stable for the period shown on the bottle label if stored as directed.

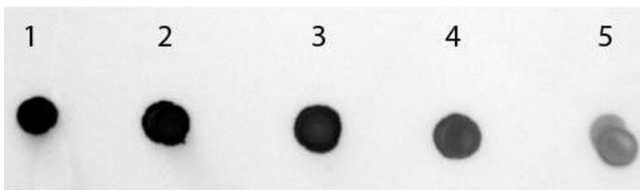
Storage:

4 °C

Expiry Date:

12 months

Images



Dot Blot

Image 1. Dot Blot of Goat anti-Human IgM (mu chain) Antibody Alkaline Phosphatase Conjugated. Antigen: Human IgM. Load: Lane 1 - 200 ng Lane 2 - 66.67 ng Lane 3 - 22.22 ng Lane 4 - 7.41 ng Lane 5 - 2.47 ng. Primary antibody: none. Secondary antibody: Goat anti-Human IgM (mu chain) Antibody Alkaline Phosphatase Conjugated at 1:1,000 for 60 min at RT. Block: ABIN925618 for 1 HR at RT. Visualized using NBT-100 Alkaline Phosphatase Substrate for 30 seconds at RT.