



Datasheet for ABIN102648

Goat anti-Monkey IgM (Chain mu) Antibody - Preadsorbed



[Go to Product page](#)

1 Image

Overview

Quantity:	1 mg
Target:	IgM
Binding Specificity:	Chain mu
Reactivity:	Monkey
Host:	Goat
Clonality:	Polyclonal
Application:	ELISA, Immunohistochemistry (IHC), Western Blotting (WB)

Product Details

Immunogen:	Immunogen: Monkey IgM whole molecule Immunogen Type: Native Protein
Isotype:	IgM
Specificity:	IgM μ chain
Cross-Reactivity:	Monkey
Characteristics:	Anti-Monkey IgM (mu chain) antibody generated in goat detects specifically monkey IgM. This secondary antibody anti-Monkey is ideal for investigators who routinely perform ELISA, Sandwich ELISA, titration assays, western-blot, immunoprecipitation and more generally immunoassays. Concentration Definition: by UV absorbance at 280 nm
Purification:	Preadsorption: Solid phase absorption
Sterility:	Sterile filtered

Target Details

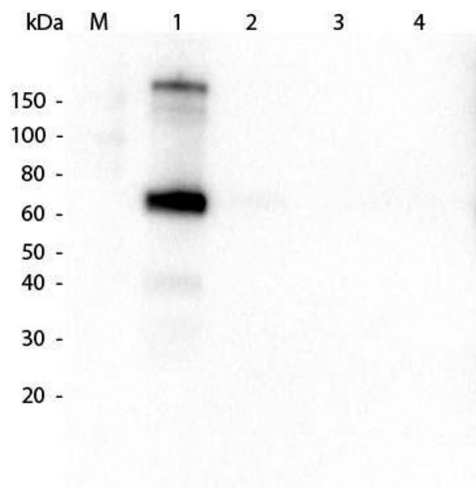
Target:	IgM
Abstract:	IgM Products
Target Type:	Antibody
Background:	<p>Synonyms: Goat Anti-Monkey IgM mu chain Antibody, Goat Anti-Monkey IgM Antibody</p> <p>Background: Anti-Monkey IgM antibody specifically detects monkey IgM. Immunoglobulin M is the largest antibody isotype and the first to be secreted against an initial exposure to antigen. IgM is predominantly produced in the spleen. Formed from covalently linking 5 immunoglobulins together, the approximate molecular weight of IgM is 900 kDa and possesses 10 binding sites (though due to the size of most antigens, not all sites are capable of binding at once). Due to this large size, IgM is typically isolated to the serum. Anti-Monkey IgM antibody is ideal for investigators in Immunology, Microbiology, and Cell Biology.</p>

Application Details

Application Notes:	<p>Immunohistochemistry Dilution: 1:500 - 1:2,500</p> <p>Application Note: Anti-Monkey IgM (mu chain) is suitable for use in immunoelectrophoresis, western-blot, competitive western-blot, ELISA and competitive ELISA assays. Specific conditions for reactivity and signal detection should be optimized by the end user.</p> <p>ELISA Dilution: 1:16,700 - 1:17,700</p> <p>Western Blot Dilution: 1:1,000 - 1:5,000</p>
Restrictions:	For Research Use only

Handling

Format:	Liquid
Concentration:	1.0 mg/mL
Buffer:	<p>Buffer: 0.02 M Potassium Phosphate, 0.15 M Sodium Chloride, pH 7.2</p> <p>Preservative: 0.01 % (w/v) Sodium Azide</p>
Preservative:	Sodium azide
Precaution of Use:	This product contains Sodium azide: a POISONOUS AND HAZARDOUS SUBSTANCE which should be handled by trained staff only.
Storage:	4 °C,-20 °C
Expiry Date:	12 months



Western Blotting

Image 1. Western Blot of Goat anti-Monkey IgM (mu chain) antibody. Lane 1: Monkey IgM. Lane 2: Monkey IgG. Lane 3: Monkey IgG (A and M Free). Lane 4: Monkey IgG F(c). Load: 50 ng per lane. Primary antibody: Goat anti-Monkey IgM (mu chain) antibody at 1:1,000 for 1 hour at RT. Secondary antibody: Peroxidase conjugated Dk-a-Gt IgG at 1:40,000 for 30 min at RT. Block: ABIN925618 for 30 min at RT. Predicted/Observed size: 70 kDa, 70 kDa for Monkey IgM (mu chain).