



Datasheet for ABIN102651

## Goat anti-Monkey IgM (Chain mu) Antibody (Alkaline Phosphatase (AP)) - Preadsorbed



[Go to Product page](#)

### 1 Image

#### Overview

Quantity:	1 mg
Target:	IgM
Binding Specificity:	Chain mu
Reactivity:	Monkey
Host:	Goat
Clonality:	Polyclonal
Conjugate:	Alkaline Phosphatase (AP)
Application:	ELISA, Immunohistochemistry (IHC), Western Blotting (WB)

#### Product Details

Immunogen:	Immunogen: Monkey IgM whole molecule
Isotype:	IgG
Specificity:	IgM $\mu$ chain
Characteristics:	<p>Anti-Monkey IgM (mu chain) Antibody generated in goat detects specifically mouse IgM whole molecule. Anti-Monkey IgM (mu chain) Antibody is ideal for investigators who routinely perform ELISA, Sandwich ELISA, titration assays, western-blot, immunoprecipitation and more generally immunoassays. Anti-Monkey IgM (mu chain) Antibody is ideal for investigators in Immunology, Cancer, and Microbiology research.</p> <p>Concentration Definition: by UV absorbance at 280 nm</p>
Purification:	Preadsorption: Solid phase absorption
Sterility:	Sterile filtered

## Target Details

---

Target:	IgM
Abstract:	<a href="#">IgM Products</a>
Target Type:	Antibody
Background:	<p>Synonyms: Goat Anti-Monkey IgM Antibody alkaline phosphatase Conjugation, Goat Anti-Monkey IgM alk phos Conjugated Antibody</p> <p>Background: Anti-Monkey IgM (mu chain) alkaline phosphatase antibody generated in goat specifically detects monkey IgM. Immunoglobulin M is the largest antibody isotype and the first to be secreted against an initial exposure to antigen. IgM is predominantly produced in the spleen. Formed from covalently linking 5 immunoglobulins together, the approximate molecular weight of IgM is 900 kDa and possesses 10 binding sites (though due to the size of most antigens, not all sites are capable of binding at once). Due to this large size, IgM is typically isolated to the serum. Anti-Monkey IgM antibody is ideal for investigators in Immunology, Microbiology, and Cell Biology.</p>

## Application Details

---

Application Notes:	<p>Immunohistochemistry Dilution: 1:200 - 1:1,000</p> <p>Application Note: Anti-Monkey IgM (mu chain) Antibody is suitable for immunoblotting (western or dot blot), ELISA, immunoperoxidase electron microscopy and immunohistochemistry as well as other peroxidase-antibody based enzymatic assays requiring lot-to-lot consistency. Specific conditions for reactivity should be optimized by the end user.</p> <p>ELISA Dilution: 1:2,000 - 1:10,000</p> <p>Western Blot Dilution: 1:500 - 1:3,000</p>
Restrictions:	For Research Use only

## Handling

---

Format:	Liquid
Concentration:	1.0 mg/mL
Buffer:	<p>Buffer: 0.05 M Tris Chloride, 0.15M Sodium Chloride, 0.001M Magnesium Chloride, 0.0001M Zinc Chloride, 50 % (v/v) Glycerol, pH 8.0</p> <p>Stabilizer: 10 mg/mL Bovine Serum Albumin (BSA) - Immunoglobulin and Protease free</p> <p>Preservative: 0.01 % (w/v) Sodium Azide</p>
Preservative:	Sodium azide

## Handling

Precaution of Use: This product contains Sodium azide: a POISONOUS AND HAZARDOUS SUBSTANCE which should be handled by trained staff only.

Handling Advice: **Do not freeze!** Freezing alkaline phosphatase conjugates will result in a substantial loss of enzymatic activity.

**Do not add Sodium azide.**

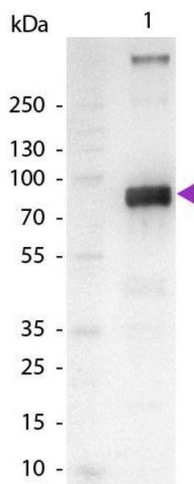
Dilute only prior to immediate use

Each reagent is stable for the period shown on the bottle label if stored as directed.

Storage: 4 °C

Expiry Date: 12 months

## Images



### Western Blotting

**Image 1.** Western Blot of Alkaline Phosphatase Conjugated Goat Anti-Monkey IgM (mu chain) Secondary Antibody. Lane 1: Monkey IgM. Lane 2: None. Load: 100 ng per lane. Primary antibody: None. Secondary antibody: Alkaline Phosphatase goat secondary antibody at 1:1,000 for 60 min at RT. Blocking: ABIN925618 for 30 min at RT. Predicted/Observed size: 72 kDa, 72 kDa for Monkey IgM. Other band(s): Monkey IgM splice variants and isoforms.