



Datasheet for ABIN102652

Goat anti-Monkey IgM (Chain mu) Antibody (Biotin) - Preadsorbed



[Go to Product page](#)

1 Image

1 Publication

Overview

Quantity:	1 mg
Target:	IgM
Binding Specificity:	Chain mu
Reactivity:	Monkey
Host:	Goat
Clonality:	Polyclonal
Conjugate:	Biotin
Application:	ELISA, Immunohistochemistry (IHC), Western Blotting (WB)

Product Details

Immunogen:	Immunogen: Monkey IgM whole molecule
Isotype:	IgM
Specificity:	IgM μ chain
Cross-Reactivity:	Monkey
Characteristics:	Anti-Monkey IgM (mu chain) biotin conjugated antibody generated in goat detects specifically monkey IgM (mu chain). This secondary biotin conjugated antibody anti-Monkey is ideal for investigators who routinely perform titration assays, western-blot, immunoprecipitation and more generally immunoassays. Concentration Definition: by UV absorbance at 280 nm
Purification:	Preadsorption: Solid phase absorption

Product Details

Labeling Ratio: 10-20

Target Details

Target: IgM

Abstract: [IgM Products](#)

Target Type: Antibody

Background: Synonyms: Goat Anti-Monkey IgM Antibody biotin Conjugation, Goat Anti-Monkey IgM biotin Conjugated Antibody
Background: Anti-Monkey IgM (mu chain) biotin conjugated antibody generated in goat detects specifically monkey IgM (mu chain). Immunoglobulin M is the largest antibody isotype and the first to be secreted against an initial exposure to antigen. IgM is predominantly produced in the spleen. Formed from covalently linking 5 immunoglobulins together, the approximate molecular weight of IgM is 900 kDa and possesses 10 binding sites (though due to the size of most antigens, not all sites are capable of binding at once). Due to this large size, IgM is typically isolated to the serum. Anti-Monkey IgM antibody is ideal for investigators in Immunology, Microbiology, and Cell Biology.

Application Details

Application Notes: Immunohistochemistry Dilution: 1:1,000 - 1:5,000
Application Note: Anti-Monkey IgG (mu chain) Biotin conjugated Antibody is suitable for immunoblotting (western or dot blot), ELISA, immunoperoxidase electron microscopy and immunohistochemistry as well as other peroxidase-antibody based enzymatic assays requiring lot-to-lot consistency.
ELISA Dilution: 1:20,000 - 1:300,000
Western Blot Dilution: 1:2,000 - 1:10,000

Restrictions: For Research Use only

Handling

Format: Lyophilized

Reconstitution: Reconstitution Volume: 1.0 mL
Reconstitution Buffer: Restore with deionized water (or equivalent)

Concentration: 1.0 mg/mL

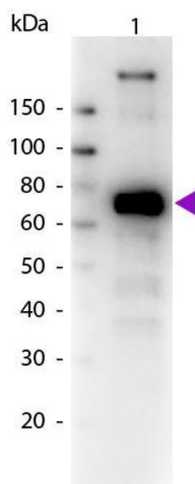
Handling

Buffer:	Buffer: 0.02 M Potassium Phosphate, 0.15 M Sodium Chloride, pH 7.2 Stabilizer: 10 mg/mL Bovine Serum Albumin (BSA) - Immunoglobulin and Protease free Preservative: 0.01 % (w/v) Sodium Azide
Preservative:	Sodium azide
Precaution of Use:	This product contains Sodium azide: a POISONOUS AND HAZARDOUS SUBSTANCE which should be handled by trained staff only.
Handling Advice:	Aliquot to Avoid repeated freezing and thawing.
Storage:	RT,4 °C,-20 °C
Expiry Date:	12 months

Publications

Product cited in: Miller-Novak, Das, Musich, Demberg, Weiner, Venzon, Mohanram, Vargas-Inchaustegui, Tuero, Ackerman, Alter, Robert-Guroff: "Analysis of Complement-Mediated Lysis of Simian Immunodeficiency Virus (SIV) and SIV-Infected Cells Reveals Sex Differences in Vaccine-Induced Immune Responses in Rhesus Macaques." in: **Journal of virology**, Vol. 92, Issue 19, (2018) ([PubMed](#)).

Images



Western Blotting

Image 1. Western Blot of Biotin conjugated Goat Anti-Monkey IgM (mu chain) secondary antibody. Lane 1: Monkey IgM. Lane 2: None. Load: 50 ng per lane. Primary antibody: None. Secondary antibody: Biotin goat secondary antibody at 1:1,000 for 60 min at RT. Block: ABIN925618 for 30 min t RT. Predicted/Observed size: 72 kDa, 72 kDa for Monkey IgM. Other band(s): None.