

Datasheet for ABIN102674

Goat anti-Mouse IgM (Heavy & Light Chain) Antibody - Preadsorbed

[Go to Product page](#)

1 Image

Overview

Quantity:	2 mg
Target:	IgM
Binding Specificity:	Heavy & Light Chain
Reactivity:	Mouse
Host:	Goat
Clonality:	Polyclonal
Application:	ELISA, Immunohistochemistry (IHC), Western Blotting (WB)

Product Details

Immunogen:	Immunogen: Mouse IgM whole molecule Immunogen Type: Native Protein
Isotype:	IgG
Specificity:	IgM μ chain
Cross-Reactivity:	Mouse (Murine)
Characteristics:	Anti-Mouse IgM (mu chain) antibody generated in goat detects specifically mouse IgM (mu chain). This secondary antibody anti-Mouse is ideal for investigators who routinely perform titration assays, western-blot, immunoprecipitation and more generally immunoassays. Concentration Definition: by UV absorbance at 280 nm
Purification:	Preadsorption: Solid phase absorption
Sterility:	Sterile filtered

Target Details

Target:	IgM
Abstract:	IgM Products
Target Type:	Antibody
Background:	<p>Synonyms: goat anti-Mouse IgM (mu chain) Antibody, Gt-a-Mouse (mu chain) antibody, Mouse IgM (mu chain) Antibody in goat, Goat anti-mouse IgM Secondary Antibody</p> <p>Background: Anti-Mouse IgM (mu chain) antibody generated in goat detects specifically mouse IgM (mu chain). Immunoglobulin M is the largest antibody isotype and the first to be secreted against an initial exposure to antigen. IgM is predominantly produced in the spleen. Formed from covalently linking 5 immunoglobulins together, the approximate molecular weight of IgM is 900 kDa and possesses 10 binding sites (though due to the size of most antigens, not all sites are capable of binding at once). Due to this large size, IgM is typically isolated to the serum. Anti-Mouse IgM antibody is ideal for investigators in Immunology, Microbiology, and Cell Biology.</p>

Application Details

Application Notes:	<p>Immunohistochemistry Dilution: 1:1,000 - 1:5,000</p> <p>Application Note: Anti-Mouse IgM (mu chain) is suitable for immunoblotting (western or dot blot), ELISA, and immunohistochemistry assays requiring lot-to-lot consistency.</p> <p>ELISA Dilution: 1:20,400 - 1:40,400</p> <p>Western Blot Dilution: 1:2,000 - 1:10,000</p>
--------------------	---

Restrictions:	For Research Use only
---------------	-----------------------

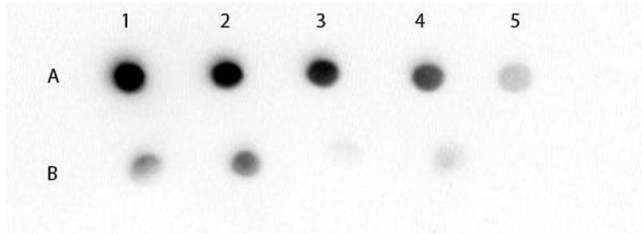
Handling

Format:	Liquid
Concentration:	2.1 mg/mL
Buffer:	<p>Buffer: 0.02 M Potassium Phosphate, 0.15 M Sodium Chloride, pH 7.2</p> <p>Preservative: 0.01 % (w/v) Sodium Azide</p>
Preservative:	Sodium azide
Precaution of Use:	This product contains Sodium azide: a POISONOUS AND HAZARDOUS SUBSTANCE which should be handled by trained staff only.
Storage:	4 °C, -20 °C

Handling

Expiry Date: 12 months

Images



Dot Blot

Image 1. Dot Blot of Mouse IgM mu chain (GOAT) Antibody
Dot Blot of Mouse IgM (mu chain) (GOAT) Antibody. Lane 1A: Mouse IgM (100 ng). Lane 1B: Mouse IgG (100 ng). Lanes 2-5: serial 3-fold dilution. Primary Antibody: Mouse IgM (mu chain) Antibody at 1 µg/mL at RT for 60 minutes. Secondary Antibody: Donkey Anti-Goat IgG Antibody HRP Conj'd at 1;40,000 dilution of 1 mg/mL at RT for 30 minutes. Block: ABIN925618 at RT for 30 min.