

Datasheet for ABIN102712

**Rabbit anti-Rat IgM (Heavy Chain) Antibody (Alkaline Phosphatase (AP)) - Preadsorbed**[Go to Product page](#)**1** Image

## Overview

Quantity:	1 mg
Target:	IgM
Binding Specificity:	Heavy Chain
Reactivity:	Rat
Host:	Rabbit
Clonality:	Polyclonal
Conjugate:	Alkaline Phosphatase (AP)
Application:	ELISA, Immunohistochemistry (IHC), Western Blotting (WB)

## Product Details

Immunogen:	Immunogen: Rat IgM whole molecule
Isotype:	IgG
Specificity:	IgM $\mu$ chain
Characteristics:	Concentration Definition: by UV absorbance at 280 nm
Purification:	PreadSORPTION: Solid phase absorption
Sterility:	Sterile filtered

## Target Details

Target:	IgM
Abstract:	<a href="#">IgM Products</a>

## Target Details

---

Target Type:	Antibody
Background:	<p>Synonyms: Rabbit Anti-Rat IgM (mu chain) Antibody alkaline phosphatase Conjugated, Rabbit Anti-Rat IgM mu Antibody alk phos Conjugation</p> <p>Background: Anti-Rat IgM antibody generated in rabbit specifically detects rat IgM heavy chain. Immunoglobulin M is the largest antibody isotype and the first to be secreted against an initial exposure to antigen. IgM is predominantly produced in the spleen. Formed from covalently linking 5 immunoglobulins together, the approximate molecular weight of IgM is 900 kDa and possesses 10 binding sites (though due to the size of most antigens, not all sites are capable of binding at once). Due to this large size, IgM is typically isolated to the serum. Anti-Rat IgM antibody is ideal for investigators in Immunology, Microbiology, and Cell Biology. This Anti-Rat IgM antibody is conjugated to alkaline phosphatase.</p>

## Application Details

---

Application Notes:	<p>Immunohistochemistry Dilution: 1:200 - 1:1,000</p> <p>Application Note: This product has been assayed against 1.0 µg of Rat IgM in a standard capture ELISA using pNPP p-nitrophenyl phosphate code # NPP-10 as a substrate for 30 minutes at room temperature. A working dilution of 1:1,000 to 1:3,000 of the reconstitution concentration is suggested for this product.</p> <p>ELISA Dilution: 1:2,000 - 1:10,000</p> <p>Western Blot Dilution: 1:500 - 1:2,500</p>
--------------------	--

Restrictions:	For Research Use only
---------------	-----------------------

## Handling

---

Format:	Liquid
Concentration:	1.0 mg/mL
Buffer:	<p>Buffer: 0.05 M Tris Chloride, 0.15M Sodium Chloride, 0.001M Magnesium Chloride, 0.0001M Zinc Chloride, 50 % (v/v) Glycerol, pH 8.0</p> <p>Stabilizer: 10 mg/mL Bovine Serum Albumin (BSA) - Immunoglobulin and Protease free</p> <p>Preservative: 0.01 % (w/v) Sodium Azide</p>
Preservative:	Sodium azide
Precaution of Use:	This product contains Sodium azide: a POISONOUS AND HAZARDOUS SUBSTANCE which should be handled by trained staff only.

## Handling

Handling Advice: **Do not freeze!** Freezing alkaline phosphatase conjugates will result in a substantial loss of enzymatic activity.

**Do not add Sodium azide.**

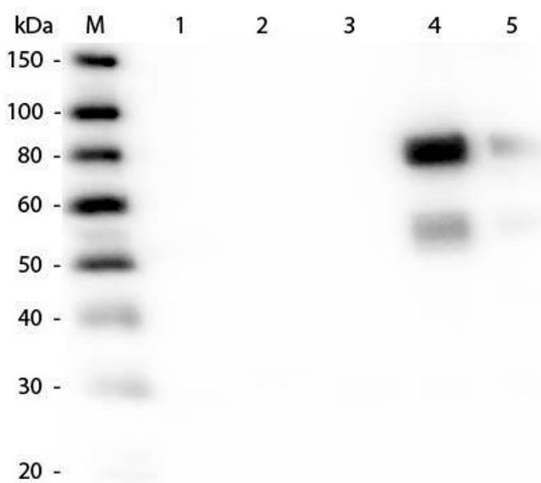
Dilute only prior to immediate use

Each reagent is stable for the period shown on the bottle label if stored as directed.

Storage: 4 °C

Expiry Date: 12 months

## Images



### Western Blotting

**Image 1.** Western Blot of Anti-Rat IgM (mu chain) (RABBIT) Antibody . Lane M: 3 µl Molecular Ladder. Lane 1: Rat IgG whole molecule . Lane 2: Rat IgG F(c) Fragment . Lane 3: Rat IgG Fab Fragment . Lane 4: Rat IgM Whole Molecule . Lane 5: Rat Serum . All samples were reduced. Load: 50 ng per lane. Block: ABIN925618 for 30 min at RT. Primary Antibody: Anti-Rat IgM (mu chain) (RABBIT) Antibody 1:2,000 for 60 min at RT. Secondary Antibody: Anti-Rabbit IgG (GOAT) Peroxidase Conjugated Antibody 1:40,000 in ABIN925618 for 30 min at RT. Predicted/Observed Size: 25 and 55 kDa for Rat IgG and Serum, 25 kDa for F(c) and Fab, 78 and 25 kDa for IgM. Rat F(c) migrates slightly higher.