

Datasheet for ABIN1027676

anti-kappa Light Chain antibody (PE)[4 Images](#)[5 Publications](#)[Go to Product page](#)

Overview

Quantity:	100 tests
Target:	kappa Light Chain
Reactivity:	Human
Host:	Mouse
Clonality:	Monoclonal
Conjugate:	This kappa Light Chain antibody is conjugated to PE
Application:	Flow Cytometry (FACS)

Product Details

Immunogen:	Human IgG-kappa myeloma protein
Clone:	TB28-2
Isotype:	IgG1 kappa
Specificity:	The antibody TB28-2 recognizes human Ig kappa light chains of both secreted and cell surface immunoglobulin. It detects also free kappa light chains.
Cross-Reactivity (Details):	Human
Purification:	Purified antibody is conjugated with R-phycoerythrin (PE) under optimum conditions. Unconjugated antibody and free fluorochrome are removed by size-exclusion chromatography.

Target Details

Target:	kappa Light Chain
---------	-------------------

Target Details

Alternative Name:	Kappa light chains (kappa Light Chain Products)
Background:	Immunoglobulin classes share the same basic four polypeptide chain structure of two heavy chains (five heavy chains types) and two light chains (kappa, lambda, both having a molecular weight of 22.5 kDa). Kappa and lambda consist of a variable region and a constant region and can easily be differentiated by the antigenic properties of the constant region. The ratio of kappa to lambda is 70:30.,Immunoglobulin kappa, Igk

Application Details

Application Notes:	Flow cytometry: The reagent is designed for analysis of human blood cells using 10 µL reagent / 100 µL of whole blood or 10 ⁶ cells in a suspension. The content of a vial (1 ml) is sufficient for 100 tests. Extracellular and intracellular staining.
Comment:	The purified antibody is conjugated with R-Phycoerythrin (PE) under optimum conditions. The conjugate is purified by size-exclusion chromatography and adjusted for direct use. No reconstitution is necessary.
Restrictions:	For Research Use only

Handling

Reconstitution:	No reconstitution is necessary.
Buffer:	Stabilizing phosphate buffered saline (PBS), pH 7.4, 15 mM sodium azide
Preservative:	Sodium azide
Precaution of Use:	This product contains Sodium azide: a POISONOUS AND HAZARDOUS SUBSTANCE which should be handled by trained staff only.
Handling Advice:	Do not freeze. Avoid prolonged exposure to light.
Storage:	4 °C
Storage Comment:	Store at 2-8°C. Protect from prolonged exposure to light. Do not freeze.

Publications

Product cited in:	Jourdan, Caraux, De Vos, Fiol, Larroque, Cognot, Bret, Duperray, Hose, Klein: "An in vitro model of differentiation of memory B cells into plasmablasts and plasma cells including detailed phenotypic and molecular characterization." in: Blood , Vol. 114, Issue 25, pp. 5173-81, (2009) (
-------------------	--

[PubMed](#)).

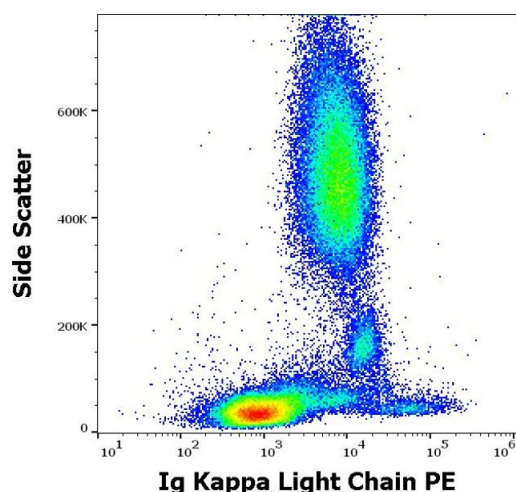
Böttcher, Ritgen, Buske, Gesk, Klapper, Hoster, Hiddemann, Unterhalt, Dreyling, Siebert, Kneba, Pott et al.: "Minimal residual disease detection in mantle cell lymphoma: methods and significance of four-color flow cytometry compared to consensus IGH-polymerase chain reaction at initial staging and for ..." in: **Haematologica**, Vol. 93, Issue 4, pp. 551-9, (2008) ([PubMed](#)).

Karandikar, Aquino, McKenna, Kroft: "Transient myeloproliferative disorder and acute myeloid leukemia in Down syndrome. An immunophenotypic analysis." in: **American journal of clinical pathology**, Vol. 116, Issue 2, pp. 204-10, (2001) ([PubMed](#)).

Nakamura, Kubagawa, Cooper: "Heterogeneity of immunoglobulin-associated molecules on human B cells identified by monoclonal antibodies." in: **Proceedings of the National Academy of Sciences of the United States of America**, Vol. 89, Issue 18, pp. 8522-6, (1992) ([PubMed](#)).

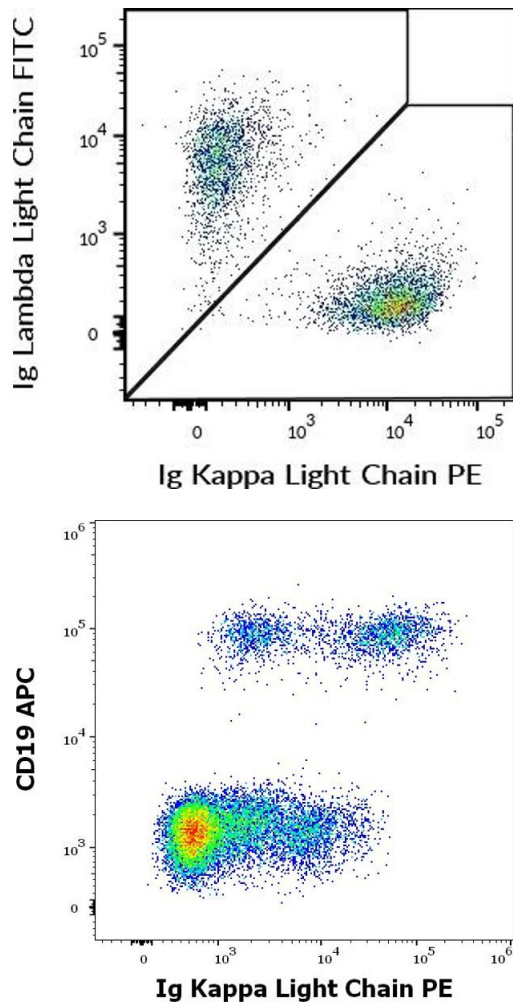
Kiyotaki, Cooper, Bertoli, Kearney, Kubagawa: "Monoclonal anti-Id antibodies react with varying proportions of human B lineage cells." in: **Journal of immunology (Baltimore, Md. : 1950)**, Vol. 138, Issue 12, pp. 4150-8, (1987) ([PubMed](#)).

Images



Flow Cytometry

Image 1. Flow cytometry surface staining pattern of human peripheral whole blood stained using anti-human Ig Kappa Light Chain (TB28-2) PE antibody (10 µL reagent / 100 µL of peripheral whole blood).



Flow Cytometry

Image 2. Flow cytometry multicolor surface staining of human CD19 positive B cells using anti-human Ig Kappa Light Chain (TB28-2) PE (c = 5 µg/mL) and anti-human Ig Lambda Light Chain (1-155-2) FITC (c = 5 µg/mL) antibodies.

Flow Cytometry

Image 3. Flow cytometry multicolor surface staining of human lymphocytes stained using anti-human Ig Kappa Light Chain (TB28-2) PE antibody (10 µL reagent / 100 µL of peripheral whole blood) and anti-human CD19 (LT19) APC antibody (10 µL reagent / 100 µL of peripheral whole blood).

Please check the [product details page](#) for more images. Overall 4 images are available for ABIN1027676.