

Datasheet for ABIN1030286  
**anti-BCL2L14 antibody (C-Term)**[Go to Product page](#)

## 2 Images

## Overview

Quantity:	0.1 mg
Target:	BCL2L14
Binding Specificity:	C-Term
Reactivity:	Human, Mouse, Rat
Host:	Rabbit
Clonality:	Polyclonal
Conjugate:	This BCL2L14 antibody is un-conjugated
Application:	Western Blotting (WB), ELISA, Immunohistochemistry (IHC)

## Product Details

Specificity:	Although antibody should react with both isoforms, only the Bcl-GS protein has been observed
Purification:	Ion exchange chromatography purified

## Target Details

Target:	BCL2L14
Abstract:	<a href="#">BCL2L14 Products</a>

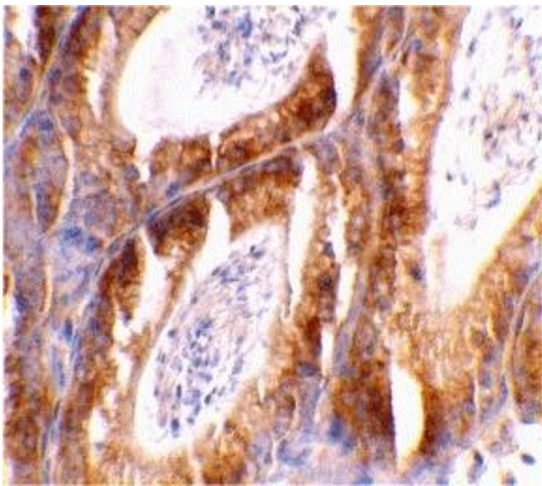
## Application Details

Application Notes:	Bcl-G antibody can be used for detection of Bcl-G by Western blot at 2.5 to 5 µg/mL.
Restrictions:	For Research Use only

## Handling

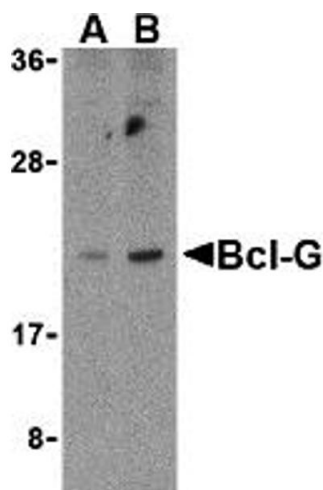
Format:	Liquid
Concentration:	1 mg/mL
Buffer:	PBS
Preservative:	Sodium azide
Precaution of Use:	This product contains sodium azide: a POISONOUS AND HAZARDOUS SUBSTANCE which should be handled by trained staff only.
Storage:	4 °C

## Images



### Immunohistochemistry

Image 1.



### Western Blotting

Image 2.