

Datasheet for ABIN1030321
anti-Cathelicidin antibody (C-Term)



[Go to Product page](#)

2 Images

Overview

Quantity:	0.1 mg
Target:	Cathelicidin (CAMP)
Binding Specificity:	C-Term
Reactivity:	Human
Host:	Rabbit
Clonality:	Polyclonal
Conjugate:	This Cathelicidin antibody is un-conjugated
Application:	Western Blotting (WB), Immunohistochemistry (IHC), ELISA

Product Details

Purification:	Affinity chromatography purified via peptide column
---------------	---

Target Details

Target:	Cathelicidin (CAMP)
Alternative Name:	Cathelicidin (CAMP Products)
Pathways:	Cellular Response to Molecule of Bacterial Origin

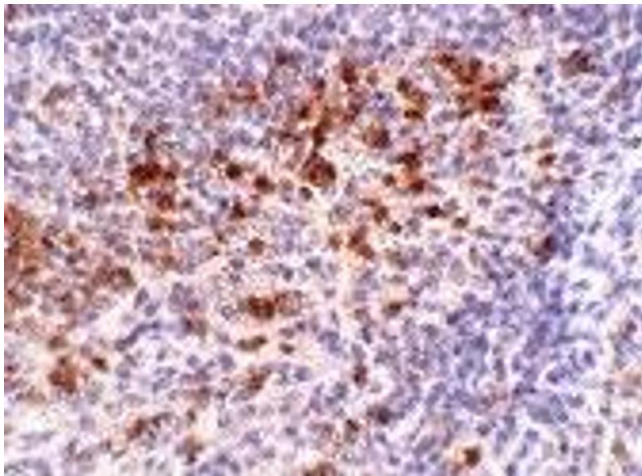
Application Details

Application Notes:	Cathelicidin antibody can be used for detection of Cathelicidin by Western blot at 1 µg/mL.
Restrictions:	For Research Use only

Handling

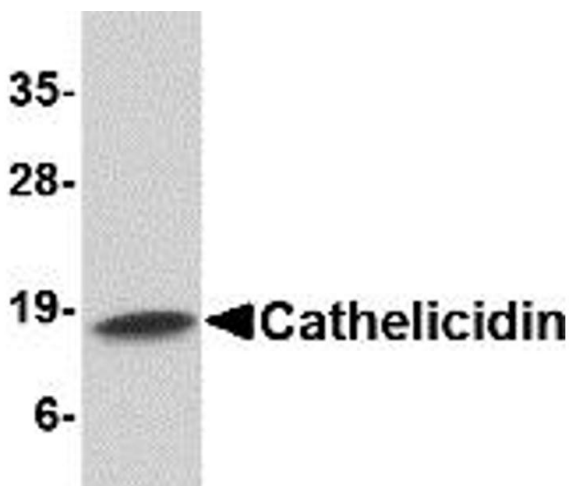
Format:	Liquid
Concentration:	1 mg/mL
Buffer:	PBS
Preservative:	Sodium azide
Precaution of Use:	This product contains sodium azide: a POISONOUS AND HAZARDOUS SUBSTANCE which should be handled by trained staff only.
Storage:	4 °C

Images



Immunohistochemistry

Image 1.



Western Blotting

Image 2.