



[Go to Product page](#)

Datasheet for ABIN1030414
anti-GLS2 antibody (C-Term)

2 Images

Overview

Quantity:	0.1 mg
Target:	GLS2
Binding Specificity:	C-Term
Reactivity:	Human, Mouse, Rat
Host:	Rabbit
Clonality:	Polyclonal
Conjugate:	This GLS2 antibody is un-conjugated
Application:	Western Blotting (WB), ELISA

Product Details

Specificity:	GLS2 antibody is predicted to not cross-react with other catenin family members. Multiple isoforms of GLS2 are known to exist.
Purification:	Affinity chromatography purified via peptide column

Target Details

Target:	GLS2
Alternative Name:	GLS2 (GLS2 Products)
Pathways:	Dicarboxylic Acid Transport , Warburg Effect

Application Details

Application Notes: GLS2 antibody can be used for detection of GLS2 by Western blot at 0.5 - 1 µg/mL.

Restrictions: For Research Use only

Handling

Format: Liquid

Concentration: 1 mg/mL

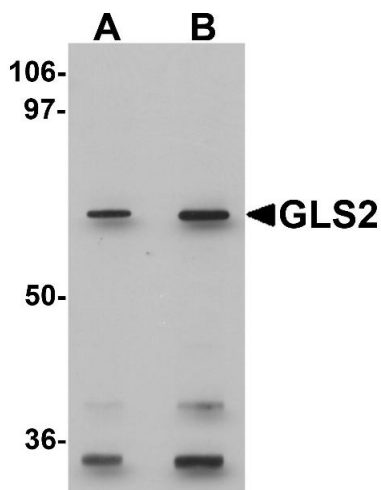
Buffer: PBS

Preservative: Sodium azide

Precaution of Use: This product contains sodium azide: a POISONOUS AND HAZARDOUS SUBSTANCE which should be handled by trained staff only.

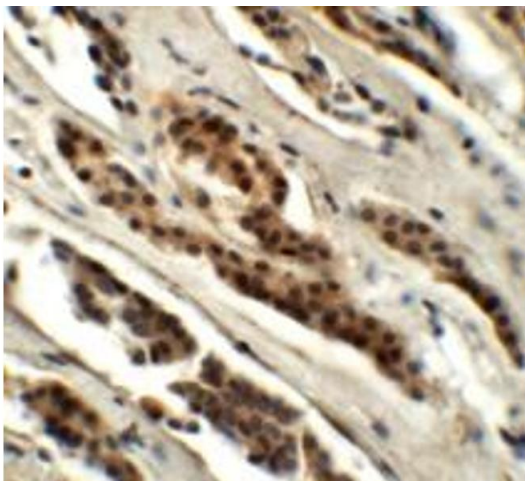
Storage: 4 °C

Images



Western Blotting

Image 1. Western blot analysis of GLS2 in rat kidney tissue lysate with GLS2 antibody at (A) 0.5 and (B) 1 µg/mL.



Immunohistochemistry

Image 2.