

Datasheet for ABIN1030598
anti-PRDM16 antibody (C-Term)



[Go to Product page](#)

2 Images

Overview

Quantity:	0.1 mg
Target:	PRDM16
Binding Specificity:	C-Term
Reactivity:	Human, Mouse, Rat
Host:	Rabbit
Clonality:	Polyclonal
Conjugate:	This PRDM16 antibody is un-conjugated
Application:	ELISA, Western Blotting (WB), Immunohistochemistry (IHC)

Product Details

Purification:	Affinity chromatography purified via peptide column
---------------	---

Target Details

Target:	PRDM16
Alternative Name:	PRDM16 (PRDM16 Products)
Pathways:	Stem Cell Maintenance, Brown Fat Cell Differentiation

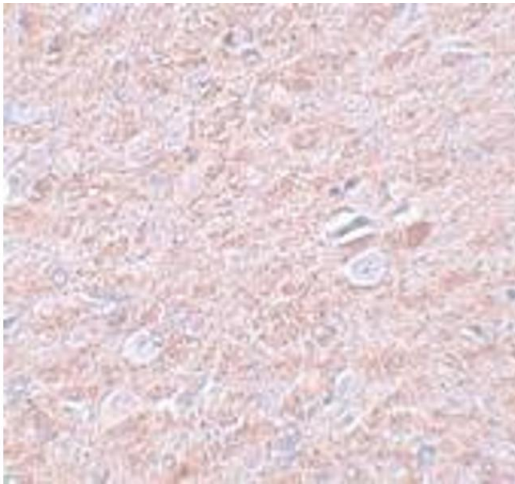
Application Details

Application Notes:	PRDM16 antibody can be used for detection of PRDM16 by Western blot at 1 - 2 µg/mL.
Restrictions:	For Research Use only

Handling

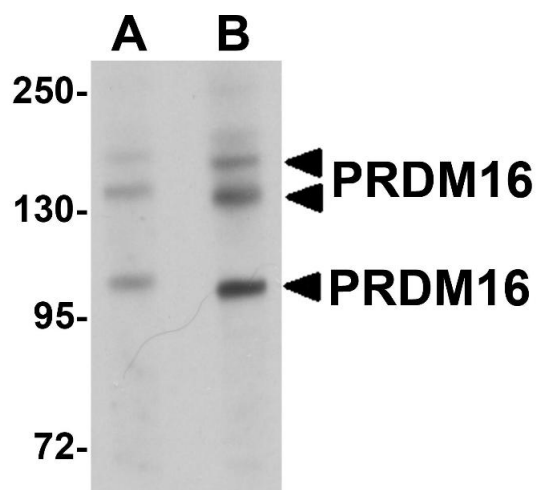
Format:	Liquid
Concentration:	1 mg/mL
Buffer:	PBS
Preservative:	Sodium azide
Precaution of Use:	This product contains sodium azide: a POISONOUS AND HAZARDOUS SUBSTANCE which should be handled by trained staff only.
Storage:	4 °C

Images



Immunohistochemistry

Image 1.



Western Blotting

Image 2.