

Datasheet for ABIN1030611  
**anti-RABGEF1 antibody (C-Term)**[Go to Product page](#)

## 2 Images

## Overview

Quantity:	0.1 mg
Target:	RABGEF1
Binding Specificity:	C-Term
Reactivity:	Human, Mouse, Rat
Host:	Rabbit
Clonality:	Polyclonal
Conjugate:	This RABGEF1 antibody is un-conjugated
Application:	ELISA, Western Blotting (WB)

## Product Details

Specificity:	At least four isoforms of RABEX5 are known to exist, this antibody will recognize all four. RABEX5 antibody is predicted to not cross-react with other LRRFIP family members.
Purification:	Affinity chromatography purified via peptide column

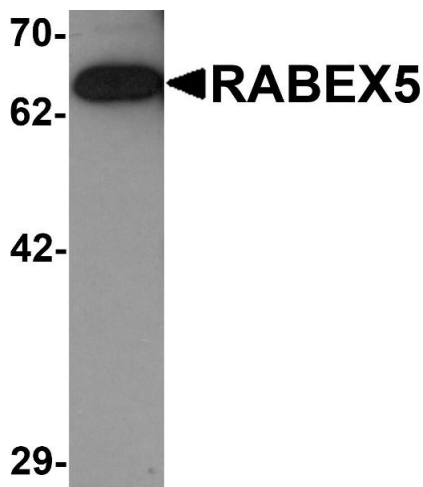
## Target Details

Target:	RABGEF1
Alternative Name:	RABEX5 ( <a href="#">RABGEF1 Products</a> )
Pathways:	<a href="#">Regulation of Leukocyte Mediated Immunity</a> , <a href="#">Positive Regulation of Immune Effector Process</a>

## Application Details

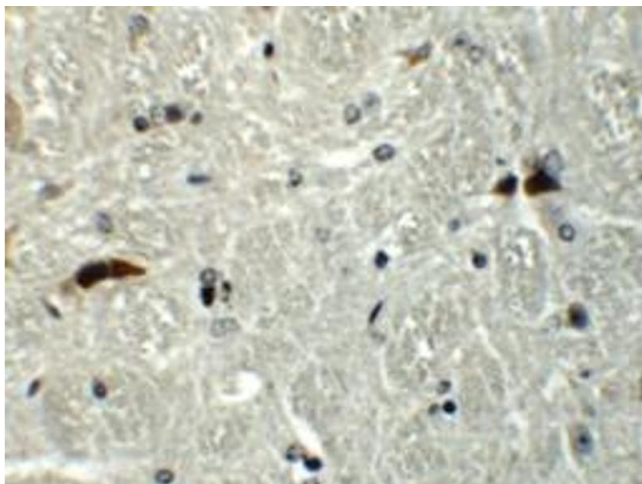
Application Notes:	RABEX5 antibody can be used for detection of RABEX5 by Western blot at 0.5 - 1 µg/mL.
Restrictions:	For Research Use only
Handling	
Format:	Liquid
Concentration:	1 mg/mL
Buffer:	PBS
Preservative:	Sodium azide
Precaution of Use:	This product contains sodium azide: a POISONOUS AND HAZARDOUS SUBSTANCE which should be handled by trained staff only.
Storage:	4 °C

## Images



### Western Blotting

**Image 1.** Western blot analysis of RABEX5 in rat brain tissue lysate with RABEX5 antibody at 1 µg/mL.



### Immunohistochemistry

**Image 2.**