

Datasheet for ABIN1030698
anti-SPTLC2 antibody (C-Term)



[Go to Product page](#)

2 Images

Overview

Quantity:	0.1 mg
Target:	SPTLC2
Binding Specificity:	C-Term
Reactivity:	Human, Mouse, Rat
Host:	Rabbit
Clonality:	Polyclonal
Conjugate:	This SPTLC2 antibody is un-conjugated
Application:	Western Blotting (WB), ELISA

Product Details

Specificity:	At least three isoforms of SPT2 are known to exist, this antibody will not detect isoform b. SPT2 antibody is predicted to not cross-react with SPT1.
Purification:	Affinity chromatography purified via peptide column

Target Details

Target:	SPTLC2
Alternative Name:	SPT2 (SPTLC2 Products)

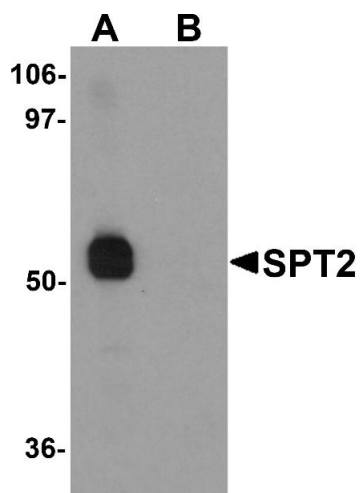
Application Details

Application Notes:	SPT2 antibody can be used for detection of SPT2 by Western blot at 1 - 2 µg/mL.
Restrictions:	For Research Use only

Handling

Format:	Liquid
Concentration:	1 mg/mL
Buffer:	PBS
Preservative:	Sodium azide
Precaution of Use:	This product contains sodium azide: a POISONOUS AND HAZARDOUS SUBSTANCE which should be handled by trained staff only.
Storage:	4 °C

Images



Western Blotting

Image 1. Western blot analysis of SPT2 in 3T3 cell lysate with SPT2 antibody at 1 µg/mL in (A) the absence and (B) the presence of blocking peptide.



Immunohistochemistry

Image 2.