



[Go to Product page](#)

Datasheet for ABIN1030727
anti-CD248 antibody (C-Term)

2 Images

Overview

Quantity:	0.1 mg
Target:	CD248
Binding Specificity:	C-Term
Reactivity:	Human, Mouse, Rat
Host:	Rabbit
Clonality:	Polyclonal
Conjugate:	This CD248 antibody is un-conjugated
Application:	Western Blotting (WB), ELISA, Immunohistochemistry (IHC)

Product Details

Specificity:	At least two isoforms of TEM1 are known to exist, this antibody recognizes both isoforms.
Purification:	Affinity chromatography purified via peptide column

Target Details

Target:	CD248
Alternative Name:	TEM1 (CD248 Products)

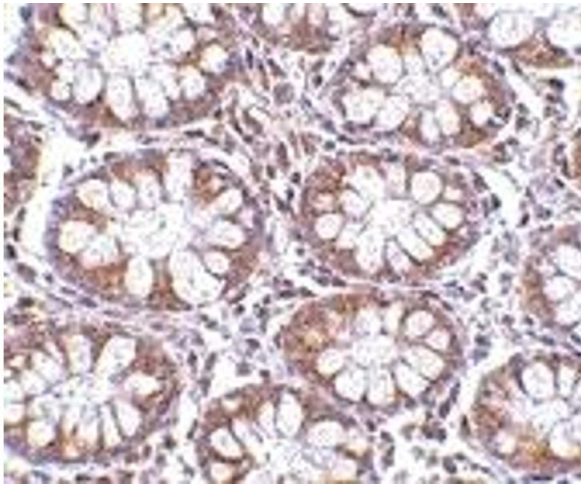
Application Details

Application Notes:	TEM1 antibody can be used for detection of TEM1 by Western blot at 0.5 - 1 µg/mL.
Restrictions:	For Research Use only

Handling

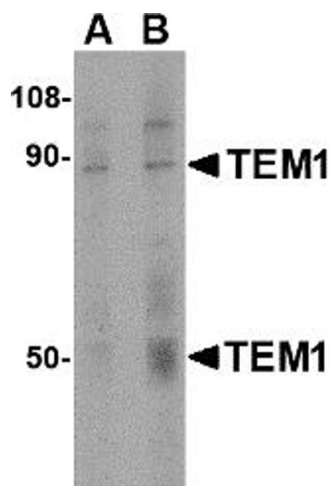
Format:	Liquid
Concentration:	1 mg/mL
Buffer:	PBS
Preservative:	Sodium azide
Precaution of Use:	This product contains sodium azide: a POISONOUS AND HAZARDOUS SUBSTANCE which should be handled by trained staff only.
Storage:	4 °C

Images



Immunohistochemistry

Image 1.



Western Blotting

Image 2.