

Datasheet for ABIN1031190
anti-SLITRK5 antibody (Middle Region 1)[Go to Product page](#)

2 Images

Overview

| | |
|----------------------|--|
| Quantity: | 0.1 mg |
| Target: | SLITRK5 |
| Binding Specificity: | Middle Region 1 |
| Reactivity: | Human, Mouse, Rat |
| Host: | Rabbit |
| Clonality: | Polyclonal |
| Conjugate: | This SLITRK5 antibody is un-conjugated |
| Application: | Western Blotting (WB), ELISA, Immunohistochemistry (IHC) |

Product Details

| | |
|---------------|--|
| Specificity: | This antibody is predicted to have no cross-reactivity to other Slitrk proteins. |
| Purification: | Affinity chromatography purified via peptide column |

Target Details

| | |
|-------------------|--|
| Target: | SLITRK5 |
| Alternative Name: | Slitrk5 (SLITRK5 Products) |

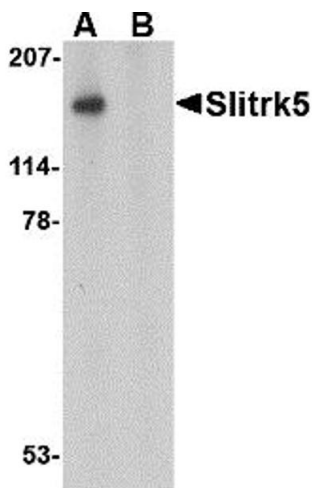
Application Details

| | |
|--------------------|---|
| Application Notes: | Slitrk5 antibody can be used for detection of Slitrk5 by Western blot at 0.5 - 1 µg/mL. |
| Restrictions: | For Research Use only |

Handling

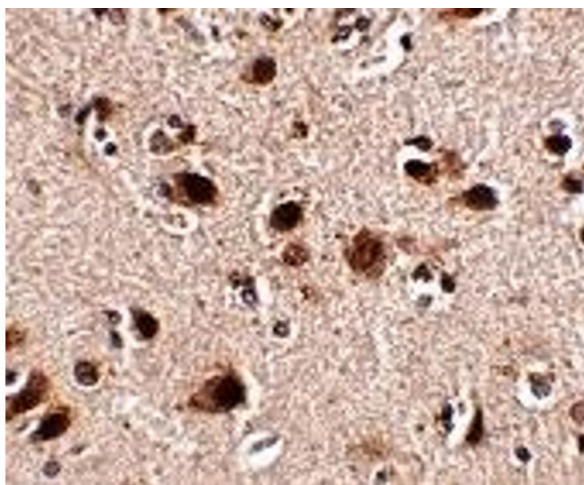
| | |
|--------------------|--|
| Format: | Liquid |
| Concentration: | 1 mg/mL |
| Buffer: | PBS |
| Preservative: | Sodium azide |
| Precaution of Use: | This product contains sodium azide: a POISONOUS AND HAZARDOUS SUBSTANCE which should be handled by trained staff only. |
| Storage: | 4 °C |

Images



Western Blotting

Image 1.



Immunohistochemistry

Image 2.