

Datasheet for ABIN1031200
anti-MTBP antibody (Middle Region 2)[Go to Product page](#)

2 Images

Overview

Quantity:	0.1 mg
Target:	MTBP
Binding Specificity:	Middle Region 2
Reactivity:	Human
Host:	Rabbit
Clonality:	Polyclonal
Conjugate:	This MTBP antibody is un-conjugated
Application:	ELISA, Western Blotting (WB), Immunocytochemistry (ICC)

Product Details

Purification:	Affinity chromatography purified via peptide column
---------------	---

Target Details

Target:	MTBP
Alternative Name:	MTBP (MTBP Products)
Molecular Weight:	104 kDa

Application Details

Application Notes:	MTBP antibody can be used for detection of MTBP by Western blot at 0.5 to 1 µg/mL. A 104 kDa band can be detected.
--------------------	--

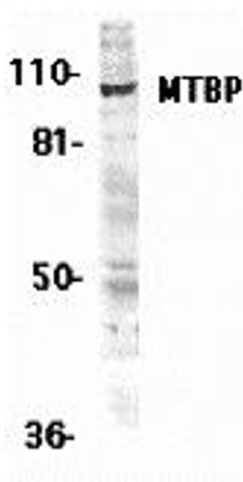
Application Details

Restrictions: For Research Use only

Handling

Format:	Liquid
Buffer:	PBS
Preservative:	Sodium azide
Precaution of Use:	This product contains sodium azide: a POISONOUS AND HAZARDOUS SUBSTANCE which should be handled by trained staff only.
Storage:	4 °C

Images



Western Blotting

Image 1.



Western Blotting

Image 2.