



[Go to Product page](#)

Datasheet for ABIN1031204

## anti-SPRED1 antibody (Middle Region 2)

### 2 Images

#### Overview

Quantity:	0.1 mg
Target:	SPRED1
Binding Specificity:	Middle Region 2
Reactivity:	Human, Mouse, Rat
Host:	Rabbit
Clonality:	Polyclonal
Conjugate:	This SPRED1 antibody is un-conjugated
Application:	Western Blotting (WB), ELISA, Immunohistochemistry (IHC)

#### Product Details

Specificity:	This Spred1 antibody is predicted to have no cross-reactivity to Spred2 or Spred3.
Purification:	Affinity chromatography purified via peptide column

#### Target Details

Target:	SPRED1
Alternative Name:	Spred1 ( <a href="#">SPRED1 Products</a> )
Pathways:	<a href="#">Positive Regulation of Response to DNA Damage Stimulus</a>

#### Application Details

Application Notes:	Spred1 antibody can be used for detection of Spred1 by Western blot at 1 - 2 µg/mL.
--------------------	---

## Application Details

Restrictions: For Research Use only

## Handling

Format: Liquid

Concentration: 1 mg/mL

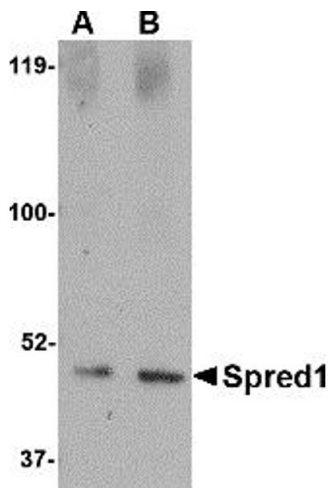
Buffer: PBS

Preservative: Sodium azide

Precaution of Use: This product contains sodium azide: a POISONOUS AND HAZARDOUS SUBSTANCE which should be handled by trained staff only.

Storage: 4 °C

## Images



### Western Blotting

Image 1.



### Immunohistochemistry

Image 2.