

Datasheet for ABIN1031268
anti-BCL9L antibody (N-Term)



[Go to Product page](#)

2 Images

Overview

| | |
|----------------------|--------------------------------------|
| Quantity: | 0.1 mg |
| Target: | BCL9L |
| Binding Specificity: | N-Term |
| Reactivity: | Human, Mouse, Rat |
| Host: | Rabbit |
| Clonality: | Polyclonal |
| Conjugate: | This BCL9L antibody is un-conjugated |
| Application: | Western Blotting (WB), ELISA |

Product Details

| | |
|---------------|---|
| Specificity: | Bcl9L antibody is predicted to not cross-react with other Bcl family members. At least four isoforms of Bcl9L are known to exist, this antibody will detect all four. |
| Purification: | Affinity chromatography purified via peptide column |

Target Details

| | |
|-------------------|--|
| Target: | BCL9L |
| Alternative Name: | Bcl9L (BCL9L Products) |
| Pathways: | Stem Cell Maintenance |

Application Details

Application Notes: Bcl9L antibody can be used for detection of Bcl9L by Western blot at 1 - 2 µg/mL.

Restrictions: For Research Use only

Handling

Format: Liquid

Concentration: 1 mg/mL

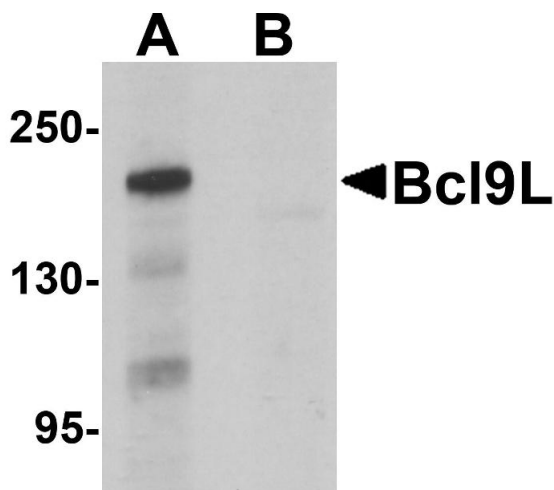
Buffer: PBS

Preservative: Sodium azide

Precaution of Use: This product contains sodium azide: a POISONOUS AND HAZARDOUS SUBSTANCE which should be handled by trained staff only.

Storage: 4 °C

Images



Western Blotting

Image 1. Western blot analysis of Bcl9L in HeLa cell lysate with Bcl9L antibody at 1 µg/mL in (A) the absence and (B) the presence of blocking peptide.



Immunohistochemistry

Image 2.