

Datasheet for ABIN1031423
anti-KDM3A antibody (N-Term)



[Go to Product page](#)

2 Images

Overview

Quantity:	0.1 mg
Target:	KDM3A
Binding Specificity:	N-Term
Reactivity:	Human, Mouse, Rat
Host:	Rabbit
Clonality:	Polyclonal
Conjugate:	This KDM3A antibody is un-conjugated
Application:	Western Blotting (WB), Immunohistochemistry (IHC), ELISA

Product Details

Specificity:	This antibody will not cross-react with JMJD1B or JMJD1C.
Purification:	Affinity chromatography purified via peptide column

Target Details

Target:	KDM3A
Alternative Name:	JMJD1A (KDM3A Products)
Pathways:	Intracellular Steroid Hormone Receptor Signaling Pathway , Nuclear Hormone Receptor Binding , Warburg Effect

Application Details

Application Notes: JMJD1A antibody can be used for detection of JMJD1A by Western blot at 1 - 2 µg/mL.

Restrictions: For Research Use only

Handling

Format: Liquid

Concentration: 1 mg/mL

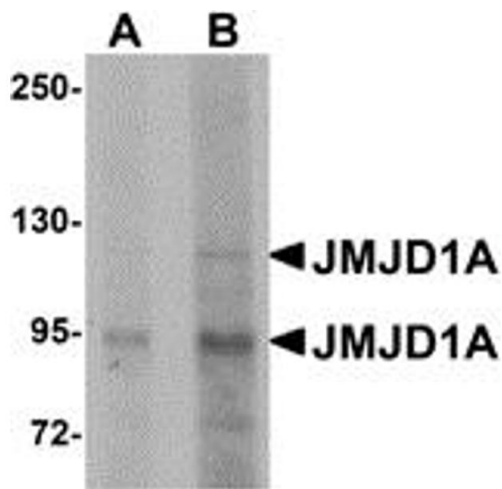
Buffer: PBS

Preservative: Sodium azide

Precaution of Use: This product contains sodium azide: a POISONOUS AND HAZARDOUS SUBSTANCE which should be handled by trained staff only.

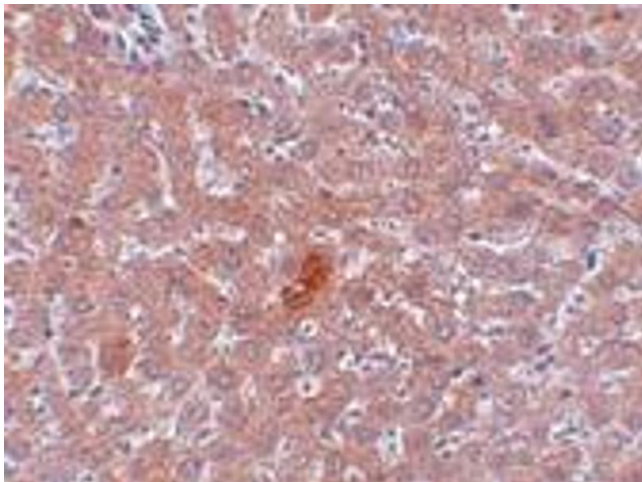
Storage: 4 °C

Images



Western Blotting

Image 1.



Immunohistochemistry

Image 2.