

Datasheet for ABIN1031425
anti-Kdm6b antibody (N-Term)



[Go to Product page](#)

2 Images

Overview

Quantity:	0.1 mg
Target:	Kdm6b
Binding Specificity:	N-Term
Reactivity:	Human, Mouse, Rat
Host:	Rabbit
Clonality:	Polyclonal
Conjugate:	This Kdm6b antibody is un-conjugated
Application:	Western Blotting (WB), ELISA

Product Details

Specificity:	This antibody is specific for JMJD3 and will not recognize other JMJD proteins.
Purification:	Affinity chromatography purified via peptide column

Target Details

Target:	Kdm6b
Alternative Name:	JMJD3 (Kdm6b Products)
Pathways:	Warburg Effect

Application Details

Application Notes:	JMJD3 antibody can be used for detection of EPAC1 by Western blot at 1 - 2 µg/mL.
--------------------	---

Application Details

Restrictions: For Research Use only

Handling

Format: Liquid

Concentration: 1 mg/mL

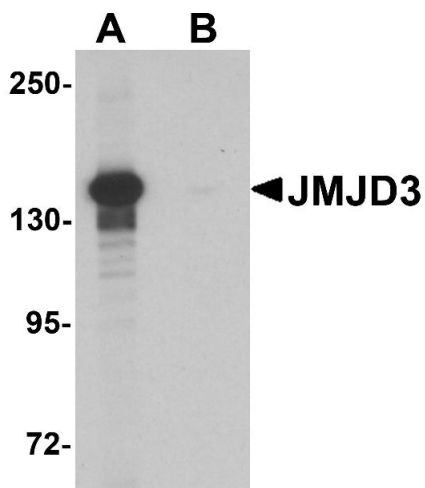
Buffer: PBS

Preservative: Sodium azide

Precaution of Use: This product contains sodium azide: a POISONOUS AND HAZARDOUS SUBSTANCE which should be handled by trained staff only.

Storage: 4 °C

Images



Western Blotting

Image 1. Western blot analysis of JMJD3 in K562 cell lysate with JMJD3 antibody at 0.5 µg/mL in (A) the absence and (B) the presence of blocking peptide.



Immunohistochemistry

Image 2.