

Datasheet for ABIN1031437  
**anti-CERS6 antibody (N-Term)**



[Go to Product page](#)

2 Images

## Overview

Quantity:	0.1 mg
Target:	CERS6
Binding Specificity:	N-Term
Reactivity:	Human, Mouse, Rat
Host:	Rabbit
Clonality:	Polyclonal
Conjugate:	This CERS6 antibody is un-conjugated
Application:	ELISA, Western Blotting (WB), Immunohistochemistry (IHC)

## Product Details

Specificity:	At least two isoforms of LASS6 are known to exist. This antibody is predicted not to cross-react with LASS5.
Purification:	Affinity chromatography purified via peptide column

## Target Details

Target:	CERS6
Alternative Name:	LASS6 ( <a href="#">CERS6 Products</a> )

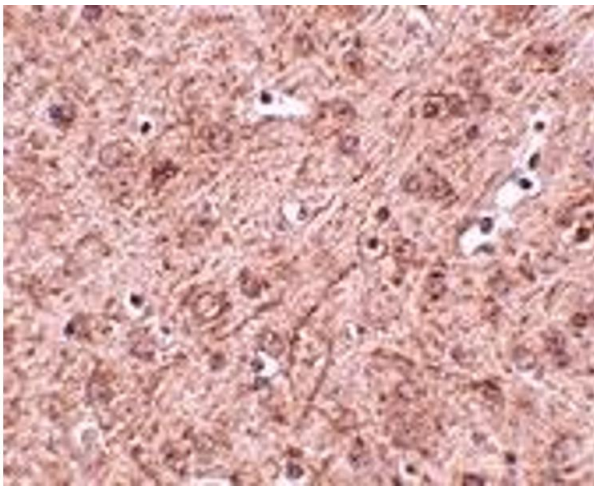
## Application Details

Application Notes:	LASS6 antibody can be used for detection of LASS6 by Western blot at 1 - 2 µg/mL.
Restrictions:	For Research Use only

## Handling

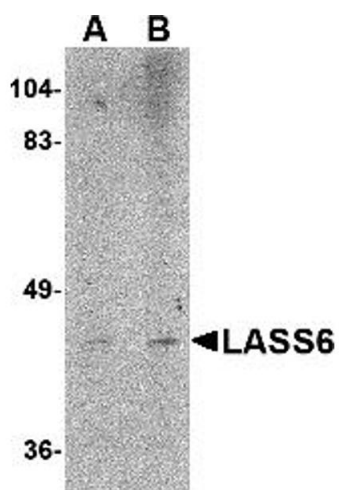
Format:	Liquid
Concentration:	1 mg/mL
Buffer:	PBS
Preservative:	Sodium azide
Precaution of Use:	This product contains sodium azide: a POISONOUS AND HAZARDOUS SUBSTANCE which should be handled by trained staff only.
Storage:	4 °C

## Images



### Immunohistochemistry

Image 1.



### Western Blotting

Image 2.