



[Go to Product page](#)

Datasheet for ABIN1031609
anti-CD248 antibody (N-Term)

2 Images

Overview

Quantity:	0.1 mg
Target:	CD248
Binding Specificity:	N-Term
Reactivity:	Human, Mouse, Rat
Host:	Rabbit
Clonality:	Polyclonal
Conjugate:	This CD248 antibody is un-conjugated
Application:	Western Blotting (WB), ELISA, Immunohistochemistry (IHC)

Product Details

Specificity:	At least two isoforms of TEM1 are known to exist, this antibody recognizes only the larger isoform.
Purification:	Affinity chromatography purified via peptide column

Target Details

Target:	CD248
Alternative Name:	TEM1 (CD248 Products)

Application Details

Application Notes:	TEM1 antibody can be used for detection of TEM1 by Western blot at 0.5 - 1 µg/mL.
--------------------	---

Application Details

Restrictions: For Research Use only

Handling

Format: Liquid

Concentration: 1 mg/mL

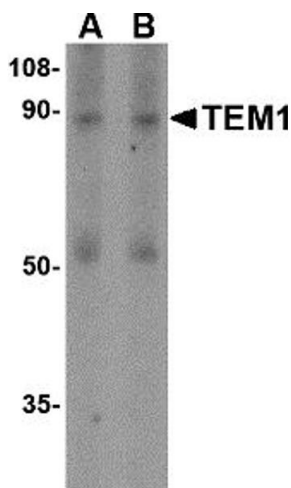
Buffer: PBS

Preservative: Sodium azide

Precaution of Use: This product contains sodium azide: a POISONOUS AND HAZARDOUS SUBSTANCE which should be handled by trained staff only.

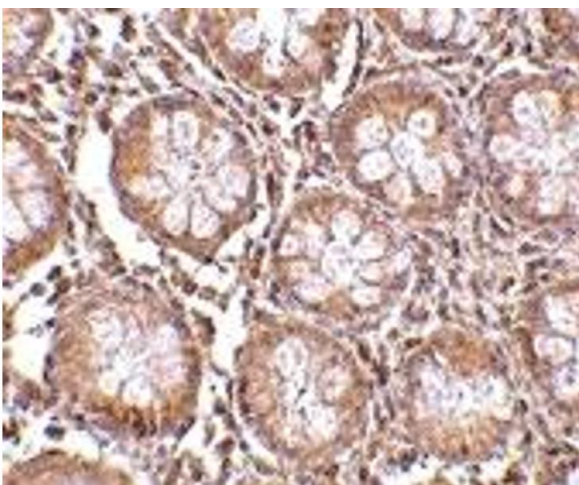
Storage: 4 °C

Images



Western Blotting

Image 1.



Immunohistochemistry

Image 2.