

Datasheet for ABIN1031699  
**anti-Caspase 12 antibody (Large Isoform)**



[Go to Product page](#)

2 Images

## Overview

Quantity:	0.1 mg
Target:	Caspase 12 (CASP12)
Binding Specificity:	Large Isoform
Reactivity:	Human, Mouse, Rat
Host:	Rabbit
Clonality:	Polyclonal
Conjugate:	This Caspase 12 antibody is un-conjugated
Application:	Western Blotting (WB), ELISA, Immunohistochemistry (IHC)

## Product Details

Purification:	Affinity chromatography purified via peptide column
---------------	---

## Target Details

Target:	Caspase 12 (CASP12)
Alternative Name:	Caspase-12 ( <a href="#">CASP12 Products</a> )
Pathways:	<a href="#">Apoptosis</a> , <a href="#">ER-Nucleus Signaling</a> , <a href="#">Positive Regulation of Endopeptidase Activity</a> , <a href="#">Unfolded Protein Response</a>

## Application Details

Application Notes:	Caspase-12 (large) antibody can be used for the detection of both the propeptide and cleaved forms of caspase-12 by Western blot at 0.5 to 2 µg/mL.
--------------------	---

## Application Details

Restrictions: For Research Use only

## Handling

Format: Liquid

Concentration: 1 mg/mL

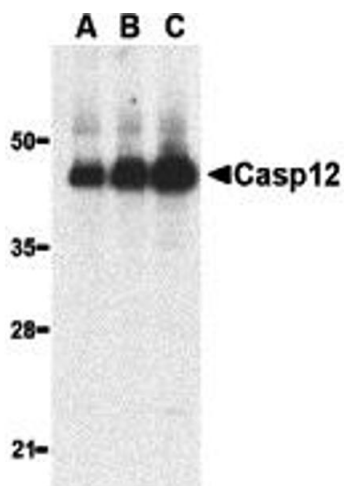
Buffer: PBS

Preservative: Sodium azide

Precaution of Use: This product contains sodium azide: a POISONOUS AND HAZARDOUS SUBSTANCE which should be handled by trained staff only.

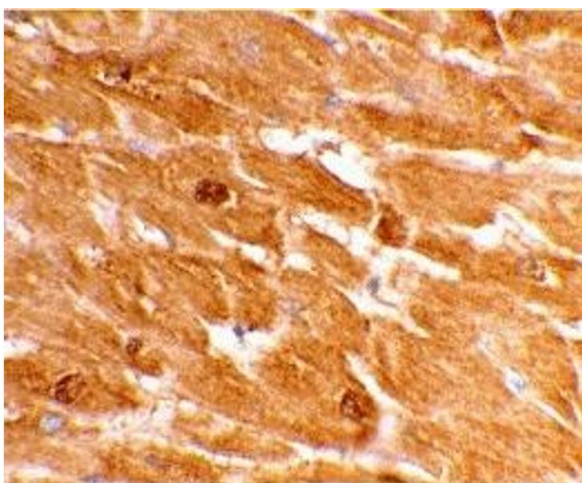
Storage: -20 °C

## Images



### Western Blotting

Image 1.



### Immunohistochemistry

Image 2.