



Datasheet for ABIN103379 anti-KLH antibody (Biotin)



[Go to Product page](#)

1 Image

Overview

Quantity:	100 µg
Target:	KLH
Reactivity:	Keyhole Limpet
Host:	Rabbit
Clonality:	Polyclonal
Conjugate:	This KLH antibody is conjugated to Biotin
Application:	ELISA, Western Blotting (WB)

Product Details

Immunogen:	KLH (Keyhole Limpet Hemocyanin Immunogenotype:Native
Isotype:	IgG
Characteristics:	Concentration Definition: by UV absorbance at 280 nm

Target Details

Target:	KLH
Abstract:	KLH Products
Background:	KLH Antibody detects Keyhole Limpet Hemocyanin protein which is a very large, heterogeneous glycosylated protein consisting of subunits with a molecular weight of 350,000 and 390,000. KLH readily forms aggregates with molecular weights of 4,500,000-13,000,000 daltons. Each domain of a KLH subunit contains two copper atoms that together bind a single oxygen

Target Details

molecule (O2). When oxygen is bound to hemocyanin, the molecule takes on a distinctive transparent, opalescent blue color. The KLH protein is potentially immunogenic yet safe in humans and is therefore highly prized as a vaccine carrier protein. The large and highly glycosylated KLH protein cannot be reproduced synthetically. It is available only as a purified biological product from the Keyhole Limpet *Megathura crenulata*. KLH is being tested in a variety of cancer vaccines, including non-Hodgkins lymphoma, cutaneous melanoma, breast and bladder cancer.

Synonyms: Keyhole Limpet Hemocyanin

Application Details

Application Notes: Anti-KLH Antibody is suitable for western blotting to detect a single band of the expected apparent molecular weight and for ELISA. Anti-KLH antibody biotin conjugate is suitable for use with streptavidin reporter systems. Researchers should determine optimal titers for applications that are not stated below.

Restrictions: For Research Use only

Handling

Format: Lyophilized

Reconstitution: Restore with deionized water (or equivalent)

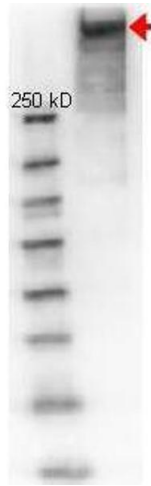
Concentration: 1.0 mg/mL

Buffer: 0.02 M Potassium Phosphate, 0.15 M Sodium Chloride, pH 7.2

Preservative: Sodium azide

Precaution of Use: This product contains sodium azide: a POISONOUS AND HAZARDOUS SUBSTANCE which should be handled by trained staff only.

Storage: 4 °C



Western Blotting

Image 1. Western Blot of Rabbit anti-KLH antibody. Lane 1: KLH reduced. Lane 2: none. Load: 1 μ g per lane. Primary antibody: KLH antibody at 1:1000 for overnight at 4°C. Secondary antibody: HRP Goat-anti Rabbit secondary antibody at 1:40,000 for 45 min at RT. Block: 1% BSA-TTBS for 30 min RT. Predicted/Observed size: 350-390 kDa for KLH. Other band(s): none.