



Datasheet for ABIN103436  
**anti-LPO antibody**



[Go to Product page](#)

1 Image

Overview

Quantity:	100 µg
Target:	LPO
Reactivity:	Cow
Host:	Sheep
Clonality:	Polyclonal
Conjugate:	This LPO antibody is un-conjugated
Application:	ELISA

Product Details

Immunogen:	Lactoperoxidase [Bovine Milk] Immunogentype:Native
Isotype:	IgG
Characteristics:	Concentration Definition: by UV absorbance at 280 nm

Target Details

Target:	LPO
Alternative Name:	Lactoperoxidase ( <a href="#">LPO Products</a> )
Background:	Synonyms: LPO antibody, Salivary peroxidase antibody, SAPX antibody, SPO antibody
Gene ID:	280844
UniProt:	<a href="#">P80025</a>

## Application Details

**Application Notes:** LACTOPEROXIDASE antibody has been assayed against 1.0 ug of Lactoperoxidase [Bovine Milk] in a standard sandwich ELISA using Peroxidase conjugated Affinity Purified anti-Sheep IgG [H&L] Rabbit and (ABTS (2,2'-azino-bis-[3-ethylbenthiazoline-6-sulfonic acid]) as a substrate for 30 minutes at room temperature. A working dilution of 1:1,000 to 1:5,000 of the reconstitution concentration is suggested for this product.

**Restrictions:** For Research Use only

## Handling

**Format:** Lyophilized

**Reconstitution:** Restore with deionized water (or equivalent)

**Concentration:** 10.0 mg/mL

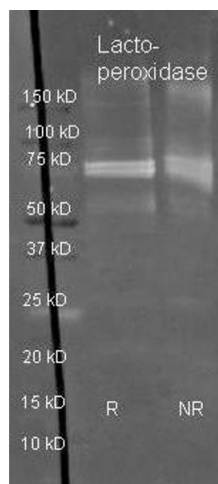
**Buffer:** 0.02 M Potassium Phosphate, 0.15 M Sodium Chloride, pH 7.2

**Preservative:** Sodium azide

**Precaution of Use:** This product contains sodium azide: a POISONOUS AND HAZARDOUS SUBSTANCE which should be handled by trained staff only.

**Storage:** 4 °C

## Images



### Western Blotting

**Image 1.** Sheep anti Lactoperoxidase antibody was used to detect Lactoperoxidase under reducing (R) and non-reducing (NR) conditions. Reduced samples of purified target proteins contained 4% BME and were boiled for 5 minutes. Samples of ~1ug of protein per lane were run by SDS-PAGE. Protein was transferred to nitrocellulose and probed with 1:3000 dilution of primary antibody (ON 4 C in ABIN925618). Detection shown was using Dylight 488 conjugated secondary antibody (605-741-125 lot 21094 1:10K in TBS/ABIN925618 1 hr RT). Images were collected using the BioRad VersaDoc System