



[Go to Product page](#)

Datasheet for ABIN103637
anti-Luciferase antibody

1 Image

2 Publications

Overview

Quantity:	2 mL
Target:	Luciferase
Reactivity:	Firefly
Host:	Goat
Clonality:	Polyclonal
Conjugate:	This Luciferase antibody is un-conjugated
Application:	ELISA

Product Details

Immunogen:	Luciferase [Firefly] Immunogentype:Native
Characteristics:	Concentration Definition: by Refractometry
Purification:	This product was prepared from monospecific antiserum by a delipidation and defibrination.

Target Details

Target:	Luciferase
Abstract:	Luciferase Products

Application Details

Application Notes:	This product has been assayed against 1.0 ug of Luciferase [Firefly] in a standard sandwich ELISA using Peroxidase conjugated Affinity Purified anti-Goat IgG [H&L] Goat) and (ABTS (2,2'-
--------------------	--

Application Details

azino-bis-[3-ethylbenthiiazoline-6-sulfonic acid]) as a substrate for 30 minutes at room temperature. A working dilution of 1:20,000 to 1:100,000 of the reconstitution concentration is suggested for this product.

Restrictions: For Research Use only

Handling

Format: Lyophilized

Reconstitution: Restore with deionized water (or equivalent)

Concentration: 95 mg/mL

Buffer: 0.02 M Potassium Phosphate, 0.15 M Sodium Chloride, pH 7.2

Preservative: Sodium azide

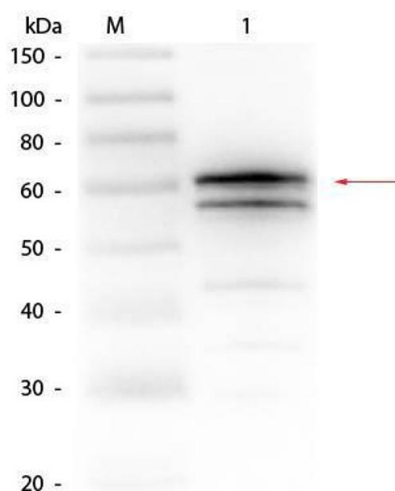
Precaution of Use: This product contains sodium azide: a POISONOUS AND HAZARDOUS SUBSTANCE which should be handled by trained staff only.

Storage: 4 °C

Publications

Product cited in: Sterzenbach, Lee, Brenneke, von Goetz, Schauer, Fox, Suerbaum, Josenhans: "Inhibitory effect of enterohepatic *Helicobacter hepaticus* on innate immune responses of mouse intestinal epithelial cells." in: **Infection and immunity**, Vol. 75, Issue 6, pp. 2717-28, (2007) ([PubMed](#)).

Images



Western Blotting

Image 1. Western Blot of Goat anti-Luciferase Antibody. Lane 1: Luciferase (Firefly). Load: 50 ng per lane. Primary antibody: Goat anti-Luciferase Antibody at 1:1,000 overnight at 4°C. Secondary antibody: HRP goat secondary antibody at 1:40,000 for 30 min at RT. Block: ABIN925618 for 30 min at RT. Predicted/Observed size: 60 kDa, 60 kDa for Luciferase.