

Datasheet for ABIN103894
anti-MAD2L2 antibody (AA 3-14)



[Go to Product page](#)

2 Images

Overview

Quantity:	100 µg
Target:	MAD2L2
Binding Specificity:	AA 3-14
Reactivity:	Human
Host:	Rabbit
Clonality:	Polyclonal
Conjugate:	This MAD2L2 antibody is un-conjugated
Application:	Western Blotting (WB), ELISA, Immunohistochemistry (IHC), Control Peptide (CP)

Product Details

Immunogen:	This affinity purified antibody was prepared from whole rabbit serum produced by repeated immunizations with a synthetic peptide corresponding to aa 3-14 of Human MAD2L2. MAD2L2 is also known as MAD2B, REV7 and mitotic arrest deficient-like 2 protein.
Isotype:	IgG
Characteristics:	Concentration Definition: by UV absorbance at 280 nm
Sterility:	Sterile filtered

Target Details

Target:	MAD2L2
Alternative Name:	MAD2L2 (MAD2L2 Products)

Target Details

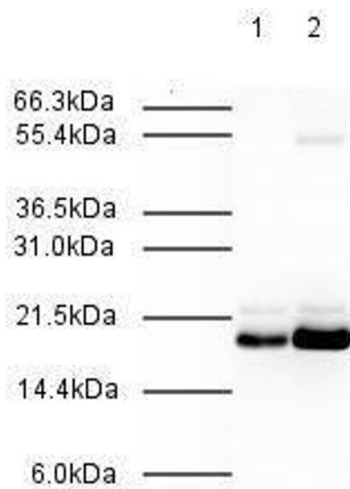
Background:	<p>MAD2L2 is a component of the mitotic spindle assembly checkpoint that prevents the onset of anaphase until all chromosomes are properly aligned at the metaphase plate. MAD2L2 is a homolog of MAD2L1.</p> <p>Synonyms: Homolog of REV7 S cerevisiae antibody, HREV7 antibody, MAD2 homolog antibody, MAD2 like 2 antibody, MAD2 mitotic arrest deficient like 2 antibody, MAD2B antibody, Mitotic Arrest Deficient 2 L2 antibody</p>
Gene ID:	187960072, 133952

Application Details

Application Notes:	<p>This affinity purified antibody has been tested for use in ELISA, immunohistochemistry and western blot. For western blotting HeLa whole cell lysates and nuclear extracts are suggested. Reactivity in other immunoassays is unknown. Antibody activity can be blocked using a control peptide (see below for ordering information).</p>
Restrictions:	For Research Use only

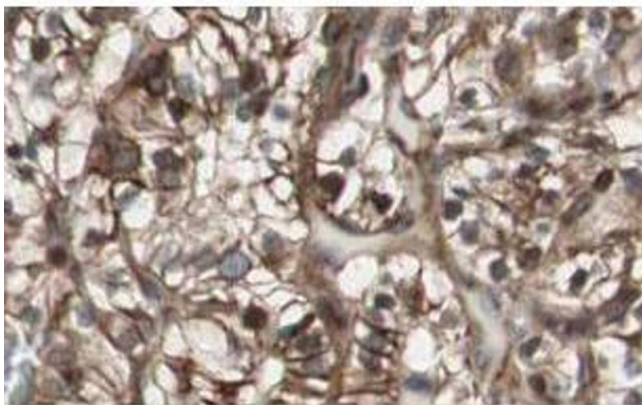
Handling

Format:	Liquid
Concentration:	0.68 mg/mL
Buffer:	0.02 M Potassium Phosphate, 0.15 M Sodium Chloride, pH 7.2
Preservative:	Sodium azide
Precaution of Use:	This product contains sodium azide: a POISONOUS AND HAZARDOUS SUBSTANCE which should be handled by trained staff only.
Storage:	-20 °C



Western Blotting

Image 1. Affinity Purified Rabbit anti-MAD2L2 was used at a 1:500 dilution to detect human MAD2L2 by western blot. Both HeLa whole cell lysate (lane 1) and nuclear lysate (lane 2) were probed using this antibody. This antibody clearly detects a ~20 kDa band corresponding to human MAD2L2 (predicted molecular weight is 24 kDa). Approximately 20 µg of each lysate was loaded on a 10% SDS-PAGE. Primary antibody was reacted with the membrane at room temperature for 1 h. After subsequent washing, a 1:2,000 dilution of HRP conjugated Gt-a-Rabbit IgG was used for visualization. Exposure time was 30 sec.



Immunohistochemistry

Image 2. Affinity Purified anti-MAD2L2 antibody shows strong nuclear and cytoplasmic staining of tumor cells in cancerous human kidney tissue. Tissue was formalin-fixed and paraffin embedded. Brown color indicates presence of protein, blue color shows cell nuclei.