

Datasheet for ABIN103904

anti-Malate Dehydrogenase (MDH) antibody[Go to Product page](#)**1** Image

Overview

Quantity:	100 µg
Target:	Malate Dehydrogenase (MDH)
Reactivity:	Pig
Host:	Sheep
Clonality:	Polyclonal
Conjugate:	Un-conjugated
Application:	ELISA, Western Blotting (WB), Immunoprecipitation (IP)

Product Details

Immunogen:	Malate Dehydrogenase [Pig Heart] Immunogen Type: Native Protein
Isotype:	IgG
Cross-Reactivity (Details):	Cross reactivity against Malate Dehydrogenase from other tissues and species may occur but have not been specifically determined.
Purity:	Anti-MALATE DEHYDROGENASE is an IgG fraction antibody purified from monospecific antiserum by a multi-step process which includes delipidation, salt fractionation and ion exchange chromatography followed by extensive dialysis against the buffer stated above. Assay by immunoelectrophoresis resulted in a single precipitin arc against anti-Sheep Serum as well as purified and partially purified Malate Dehydrogenase [Pig Heart].
Endotoxin Level:	Low Endotoxin : No

Target Details

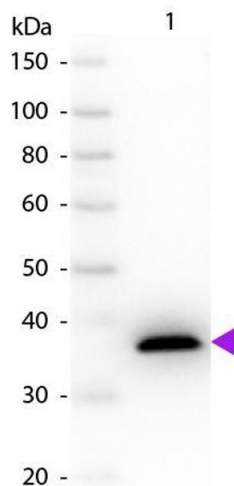
Target:	Malate Dehydrogenase (MDH)
Alternative Name:	Malate Dehydrogenase (MDH Products)
Background:	Synonyms: Malate dehydrogenase, cytoplasmic EC=1.1.1.37 Cytosolic malate dehydrogenase
Gene ID:	396894
UniProt:	P11708
Pathways:	Regulation of Lipid Metabolism by PPARalpha

Application Details

Application Notes:	<p>MALATE DEHYDROGENASE antibody has been assayed against 1.0 µg of Malate Dehydrogenase [Pig Heart] in a standard sandwich ELISA using Peroxidase conjugated Affinity Purified anti-Sheep IgG [H&L] (Goat) code #611-1302 and (ABTS (2,2'-azino-bis-[3-ethylbenthiazoline-6-sulfonic acid]) code # ABTS-100 as a substrate for 30 minutes at room temperature. A working dilution of 1:10.000 to 1:40.000 of the reconstitution concentration is suggested for this product.</p> <p>ELISA Dilution: 1:5.000 - 1:20.000</p> <p>IF Immunoprecipitation Dilution: 1:100</p> <p>Western Blot Dilution: 1:500 - 1:5.000</p>
Restrictions:	For Research Use only

Handling

Format:	Liquid
Concentration:	1 mg/mL
Buffer:	0.02 M Potassium Phosphate, 0.15 M Sodium Chloride, pH 7.2
Handling Advice:	Store the vial at -20°C or below after dilution. Avoid cycles of freezing and thawing.
Storage:	-20 °C
Storage Comment:	Store vial at -20 °C or below prior to opening. This vial contains a relatively low volume of reagent (25 µL). To minimize loss of volume dilute 1:10 by adding 225 µL of the buffer stated above directly to the vial. Recap, mix thoroughly and briefly centrifuge to collect the volume at the bottom of the vial. Use this intermediate dilution when calculating final dilutions as recommended below.
Expiry Date:	Expiration date is one (1) year from date of opening.



Western Blotting

Image 1. Western Blot of Sheep anti-Malate Dehydrogenase antibody. Lane 1: Malate Dehydrogenase. Lane 2: None. Load: 50 ng per lane. Primary antibody: Malate Dehydrogenase antibody at 1:1,000 for overnight at 4°C. Secondary antibody: Peroxidase sheep secondary antibody at 1:40,000 for 30 min at RT. Block: ABIN925618 for 30 min at RT. Predicted/Observed size: 36 kDa, 36 kDa for Malate Dehydrogenase. Other band(s): None.