

Datasheet for ABIN1042590
anti-EAPP antibody (N-Term)



[Go to Product page](#)

1 Image

Overview

Quantity:	0.1 mL
Target:	EAPP
Binding Specificity:	N-Term
Reactivity:	Human, Mouse
Host:	Mouse
Clonality:	Monoclonal
Conjugate:	This EAPP antibody is un-conjugated
Application:	Western Blotting (WB), Immunofluorescence (IF), Immunocytochemistry (ICC), Immunoprecipitation (IP)

Product Details

Immunogen:	GST-N-terminal fragment of human EAPP (Immunogen sequence: 1-266 (GST fusion))
Clone:	1-00E-004
Isotype:	Ig Fraction
Purification:	Protein G

Target Details

Target:	EAPP
Alternative Name:	EAPP (EAPP Products)
Background:	Synonyms:

Target Details

E2F- associated phosphoprotein antibody, E2F 1 antibody,E2F transcription factor 1 antibody,E2F-1 antibody,E2F1 antibody,E2f1 E2F transcription factor 1 antibody,E2F1_HUMAN antibody,KIAA4009 antibody,mKIAA4009 antibody

Gene ID: 55837, 66266

OMIM: 609486

Application Details

Application Notes: Optimal antibody dilution should be determined by titration, however as a guideline try up to 1:200 for western blot

Comment: Myeloma, fusion partners: X63-Ag8.653

Restrictions: For Research Use only

Handling

Format: Liquid

Concentration: 1 mg/mL

Buffer: Purified antibody (from supernatant) containing PBS + 0.1 % sodium azide

Preservative: Sodium azide

Precaution of Use: This product contains Sodium azide: a POISONOUS AND HAZARDOUS SUBSTANCE which should be handled by trained staff only.

Images

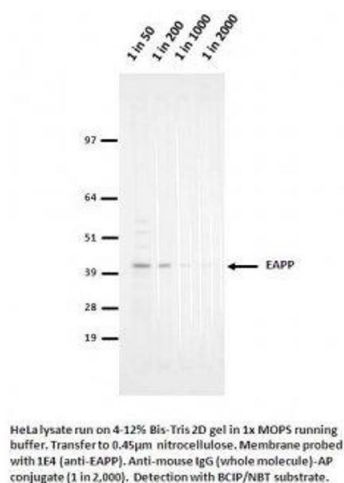


Image 1.