

Datasheet for ABIN1042593
anti-Fibronectin antibody



[Go to Product page](#)

1 Image

Overview

Quantity:	0.1 mL
Target:	Fibronectin
Reactivity:	Human, Mouse
Host:	Mouse
Clonality:	Monoclonal
Conjugate:	This Fibronectin antibody is un-conjugated
Application:	Western Blotting (WB), Immunocytochemistry (ICC), Immunohistochemistry (Paraffin-embedded Sections) (IHC (p))

Product Details

Immunogen:	Hybridoma produced by the fusion of splenocytes from BALB/c mice immunized with T-cell lymphoma biopsy and mouse myeloma cells
Clone:	EP5
Isotype:	IgG1
Purification:	Protein G affinity chromatography

Target Details

Target:	Fibronectin
Abstract:	Fibronectin Products
Background:	Synonyms: CIG antibody,Cold insoluble globulin antibody,Cold-insoluble globulin

Target Details

	antibody,DKFZp686F10164 antibody,DKFZp686H0342 antibody
Gene ID:	2335, 14268

Application Details

Application Notes:	Optimal antibody dilution should be determined by titration, however try, IHC (P): 1 µg/mL
Comment:	Myeloma, fusion partners: SP2/0 myeloma cell line
Restrictions:	For Research Use only

Handling

Format:	Liquid
Concentration:	1 mg/mL
Buffer:	Purified antibody in phosphate buffered saline containing 10 mM sodium azide
Preservative:	Sodium azide
Precaution of Use:	This product contains Sodium azide: a POISONOUS AND HAZARDOUS SUBSTANCE which should be handled by trained staff only.

Images

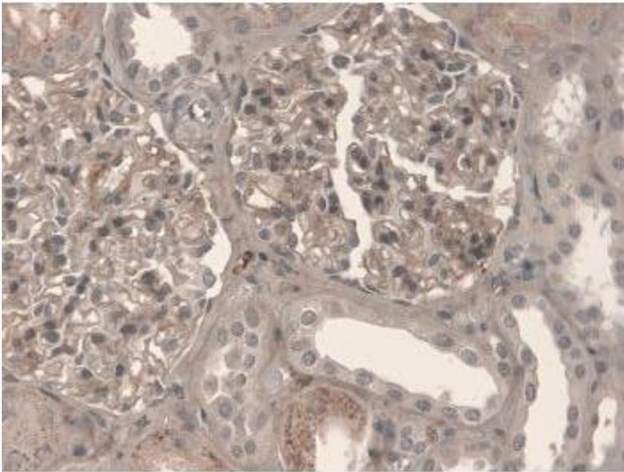


Image 1.