

Datasheet for ABIN1042619
anti-Thymopoietin antibody (AA 650-750)



[Go to Product page](#)

1 Image

Overview

Quantity:	0.1 mL
Target:	Thymopoietin (TMPO)
Binding Specificity:	AA 650-750
Reactivity:	Human
Host:	Mouse
Clonality:	Monoclonal
Conjugate:	This Thymopoietin antibody is un-conjugated
Application:	Western Blotting (WB), Immunofluorescence (IF), Immunocytochemistry (ICC), Immunoprecipitation (IP)

Product Details

Immunogen:	Synthetic peptide conjugated to KLH derived from within residues 650 - 750 of Human LAP2 alpha.
Clone:	3A3
Isotype:	IgG1 kappa
Specificity:	Recognizes wt LAP2 alpha and mutant LAP2 alpha equally well.
Purification:	Protein G

Target Details

Target:	Thymopoietin (TMPO)
---------	---------------------

Target Details

Abstract:	TMPO Products
Background:	Synonyms: Lamina associated polypeptide 2 alpha antibody,LAP2 antibody,Thymopoietin antibody,TP alpha antibody,TP antibody
Gene ID:	7112, 24380
OMIM:	188380
UniProt:	Q01062

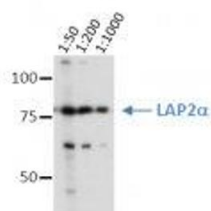
Application Details

Application Notes:	Optimal antibody dilution should be determined by titration, however as a guideline try, WB: Use a concentration of 1 µg/mL. Detects a band of approximately 77 kDa (predicted molecular weight: 75 kDa).
Comment:	Myeloma, fusion partners: X63-Ag8.653
Restrictions:	For Research Use only

Handling

Format:	Liquid
Concentration:	1 mg/mL
Buffer:	Purified antibody (from supernatant) containing PBS + 0.1 % sodium azide
Preservative:	Sodium azide
Precaution of Use:	This product contains Sodium azide: a POISONOUS AND HAZARDOUS SUBSTANCE which should be handled by trained staff only.

anti human LAP2 α , clone 3A3



HeLa cells were boiled in Laemmli buffer and the proteins were separated by 8% SDS-PAGE and blotted onto nitrocellulose membrane (Schleicher&Schüll). The membrane was blocked in 3% NFDm in PBS-T for 1h at RT and incubated at 4°C o/n with anti LAP2 α , clone 3A3 antibody at the indicated dilutions in 0.5% NFDm/PBS-T. After incubation with anti-mouse Fc-HRP coupled secondary antibody (Jackson Immunoresearch) for 1h at RT, ECL was performed with the Western Lightning reagents (Perkin Elmer). A 30sec exposure is shown.

Image 1.