



[Go to Product page](#)

Datasheet for ABIN1042656

anti-PPP2R4 antibody (AA 302-309)

1 Image

1 Publication

Overview

Quantity:	0.1 mL
Target:	PPP2R4
Binding Specificity:	AA 302-309
Reactivity:	Human, Mouse, Rat, Saccharomyces cerevisiae
Host:	Mouse
Clonality:	Monoclonal
Conjugate:	This PPP2R4 antibody is un-conjugated
Application:	Western Blotting (WB), Immunoprecipitation (IP)

Product Details

Immunogen:	C-terminal peptide of human PP2A catalytic subunit (Immunogen sequence: 302-RRTPDYFL-309).
Clone:	7A6
Isotype:	IgG1
Specificity:	PP2A C-terminal (alpha+beta isoforms)
Purification:	Protein G

Target Details

Target:	PPP2R4
Alternative Name:	PP2A (PPP2R4 Products)

Target Details

Background:	Synonyms: PP2A A antibody,PP2A alpha antibody,PP2A B antibody,PP2A beta antibody,PP2Ac antibody,PP2C alpha antibody,PP2C beta antibody,PP2CA antibody,PP2CB antibody,PPP2CA antibody,PPP2CB antibody,Protein phosphatase 2 (formerly 2A) catalytic subunit alpha isoform antibody,Protein phosphatase 2 (formerly 2A) catalytic subunit beta isoform antibody,Protein phosphatase 2 antibody,Protein phosphatase 2 catalytic subunit alpha isoform antibody,Protein phosphatase 2 catalytic subunit beta isoform antibody,Protein Phosphatase 2A antibody,Protein phosphatase type 2A catalytic subunit antibody,Replication protein C antibody,RP C antibody,Serine/threonine protein phosphatase 2A catalytic subunit alpha isoform antibody,Serine/threonine protein phosphatase 2A catalytic subunit beta isoform antibody,Serine/threonine protein phosphatase antibody
Gene ID:	5515, 19052
OMIM:	176915
UniProt:	P67775 , P63330
Pathways:	PI3K-Akt Signaling , M Phase , Hepatitis C , Toll-Like Receptors Cascades

Application Details

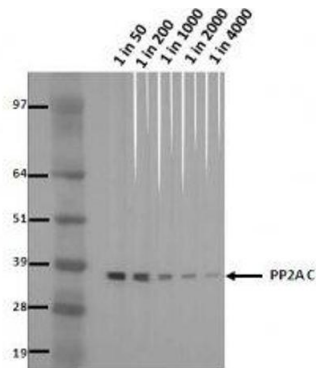
Application Notes:	Optimal antibody dilution should be determined by titration, however as a guideline try up to 1:2000-1:4000 for western blot
Comment:	Myeloma, fusion partners: X63-Ag8.653
Restrictions:	For Research Use only

Handling

Format:	Liquid
Concentration:	1 mg/mL
Buffer:	Purified antibody (from supernatant) containing PBS + 0.1 % sodium azide
Preservative:	Sodium azide
Precaution of Use:	This product contains Sodium azide: a POISONOUS AND HAZARDOUS SUBSTANCE which should be handled by trained staff only.

Product cited in: Hall, Cowan: "Structural features and restricted expression of a human alpha-tubulin gene." in:
Nucleic acids research, Vol. 13, Issue 1, pp. 207-23, (1985) ([PubMed](#)).

Validation report #103699 for Western Blotting (WB)



NIH Puro lysate run on 4-12% Bis-Tris 2D gel in 1x MOPS running buffer. Transfer to 0.45µm nitrocellulose. Membrane probed with 7A6 (anti-PP2A C). Anti-mouse IgG (whole molecule)-AP conjugate (1 in 2,000). Detection with BCIP/NBT substrate.

Image 1.