

Datasheet for ABIN1042657  
**anti-PPP2R5D antibody (N-Term)**[Go to Product page](#)

## 1 Image

## Overview

Quantity:	0.1 mL
Target:	PPP2R5D
Binding Specificity:	N-Term
Reactivity:	Human, Rat
Host:	Mouse
Clonality:	Monoclonal
Conjugate:	This PPP2R5D antibody is un-conjugated
Application:	Western Blotting (WB), Immunoprecipitation (IP)

## Product Details

Immunogen:	GST-N-terminal fragment of human B' /B56 delta (Immunogen sequence: 2-165 (GST fusion))
Clone:	H5-D12
Isotype:	IgG1
Specificity:	B' /B56 delta. No cross reactivity with B/B55, B' /B56 alpha, beta, gamma, epsilon
Purification:	Protein G

## Target Details

Target:	PPP2R5D
Alternative Name:	PP2A B' /B56 delta ( <a href="#">PPP2R5D Products</a> )
Background:	Synonyms:

Target Details

PP2A B antibody,PP2A beta antibody,PP2Ac antibody,Protein phosphatase 2 (formerly 2A) catalytic subunit alpha isoform antibody,Protein phosphatase 2 (formerly 2A) catalytic subunit beta isoform antibody,Protein phosphatase 2 antibody

Pathways: [PI3K-Akt Signaling](#), [Activation of Innate immune Response](#), [Toll-Like Receptors Cascades](#)

Application Details

Application Notes:	Optimal antibody dilution should be determined by titration, however as a guideline try up to 1:4,000 for western blot
Comment:	Myeloma, fusion partners: FoxNY
Restrictions:	For Research Use only

Handling

Format:	Liquid
Concentration:	1 mg/mL
Buffer:	Purified antibody (from supernatant) containing PBS + 0.1 % sodium azide
Preservative:	Sodium azide
Precaution of Use:	This product contains Sodium azide: a POISONOUS AND HAZARDOUS SUBSTANCE which should be handled by trained staff only.

Images

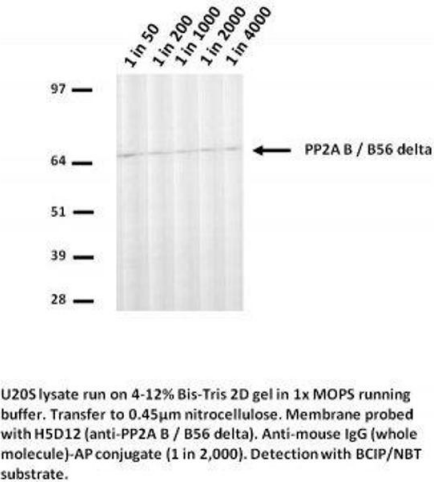


Image 1.