



[Go to Product page](#)

Datasheet for ABIN1043030

anti-TUBGCP2 antibody (AA 2-194)

1 Image

2 Publications

Overview

Quantity:	0.1 mg
Target:	TUBGCP2
Binding Specificity:	AA 2-194
Reactivity:	Human, Mouse, Rat, Pig
Host:	Mouse
Clonality:	Monoclonal
Conjugate:	This TUBGCP2 antibody is un-conjugated
Application:	Western Blotting (WB), Immunocytochemistry (ICC), Immunoprecipitation (IP), Immunohistochemistry (Paraffin-embedded Sections) (IHC (p))

Product Details

Immunogen:	GST-fusion protein containing amino acids 2-194 of mouse GCP2
Clone:	GCP2-01
Isotype:	IgG2b kappa
Specificity:	The mouse monoclonal antibody GCP2-01 recognizes gamma-tubulin complex component 2 (GCP2), a 95-103 kDa intracellular protein. It recognizes also phosphorylated GCP2.
Cross-Reactivity (Details):	Human, Porcine, Mouse, Rat
Purification:	Purified by protein-A affinity chromatography.
Purity:	> 95 % (by SDS-PAGE)

Target Details

Target:	TUBGCP2
Alternative Name:	Gamma-tubulin complex component 2 (TUBGCP2 Products)
Background:	Tubulin gamma complex associated protein 2, Gamma tubulin complex component 2 (GCP2) is 95-103 kDa protein which associates with two molecules of gamma tubulin and one molecule of gamma tubulin complex component 3 (GCP3), to form the gamma tubulin small complexes (gammaTuSCs). These complexes interact with GCP4, 5, and 6 to form the gamma tubulin ring complexes (gammaTuRCs), which are embedded in the microtubule organizing center matrix where they nucleate microtubules. The gammaTuRCs are also involved in the regulation of microtubule plus and minus end dynamics. Components of gamma tubulin complexes are highly conservative in eukaryotes., GCP-2, GTCC2, GTC2
Gene ID:	10844
UniProt:	Q9BSJ2
Pathways:	M Phase , SARS-CoV-2 Protein Interactome

Application Details

Application Notes:	Western blotting: Recommended dilution: 1-2 µg/mL, reducing conditions.
Restrictions:	For Research Use only

Handling

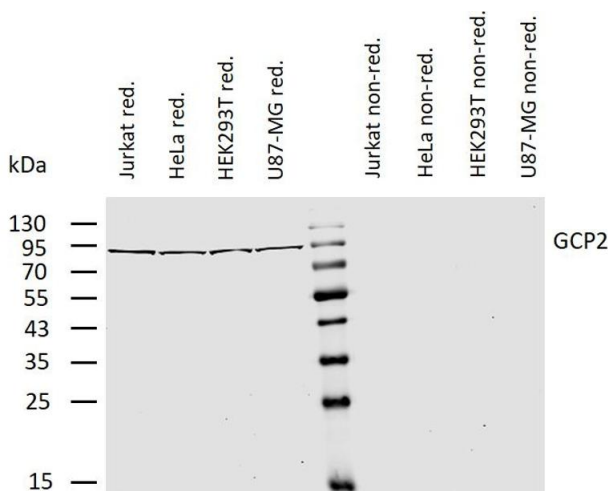
Concentration:	1 mg/mL
Buffer:	Phosphate buffered saline (PBS), pH 7.4, 15 mM sodium azide
Preservative:	Sodium azide
Precaution of Use:	This product contains Sodium azide: a POISONOUS AND HAZARDOUS SUBSTANCE which should be handled by trained staff only.
Handling Advice:	Do not freeze.
Storage:	4 °C
Storage Comment:	Store at 2-8°C. Do not freeze.

Publications

Product cited in:	Dráberová, DAgostino, Caracciolo, Sládková, Sulimenko, Sulimenko, Sobol, Maounis, Tzelepis,
-------------------	---

Mahera, K?en, Legido, Giordano, Mörk, Hozák, Dráber, Katsetos: "Overexpression and Nucleolar Localization of γ -Tubulin Small Complex Proteins GCP2 and GCP3 in Glioblastoma." in: **Journal of neuropathology and experimental neurology**, Vol. 74, Issue 7, pp. 723-42, (2015) ([PubMed](#)).

Ho?ejší, Vinopal, Sládková, Dráberová, Sulimenko, Sulimenko, Vosecká, Philimonenko, Hozák, Katsetos, Dráber: "Nuclear γ -tubulin associates with nucleoli and interacts with tumor suppressor protein C53." in: **Journal of cellular physiology**, Vol. 227, Issue 1, pp. 367-82, (2011) ([PubMed](#)).



Western Blotting

Image 1. Western blotting analysis of human gamma-tubulin complex component 2 (GCP2) using mouse monoclonal antibody GCP2-01 on lysates of various cell lines under reducing and non-reducing conditions. Nitrocellulose membrane was probed with 2 μ g/mL of mouse anti-GCP2 monoclonal antibody followed by IRDye800-conjugated anti-mouse secondary antibody. A specific band was detected for GCP2 at approximately 95 kDa.