

Datasheet for ABIN1043031  
**anti-PTPRJ antibody (AA 1-444)**[Go to Product page](#)

## 2 Images

## Overview

Quantity:	0.1 mg
Target:	PTPRJ
Binding Specificity:	AA 1-444
Reactivity:	Human
Host:	Mouse
Clonality:	Monoclonal
Conjugate:	This PTPRJ antibody is un-conjugated
Application:	Flow Cytometry (FACS)

## Product Details

Immunogen:	Human recombinant CD148 (amino acids 1-444)
Clone:	MEM-CD148-05
Isotype:	IgG2b
Specificity:	The mouse monoclonal antibody MEM-CD148/05 recognizes an extracellular epitope of CD148, a highly glycosylated up to 250 kDa receptor-like protein tyrosin phosphatase expressed mainly in lymphocytes, myeloid cells and epithelial cells.
Cross-Reactivity (Details):	Human
Purification:	Purified by protein-A affinity chromatography.
Purity:	> 95 % (by SDS-PAGE)

## Target Details

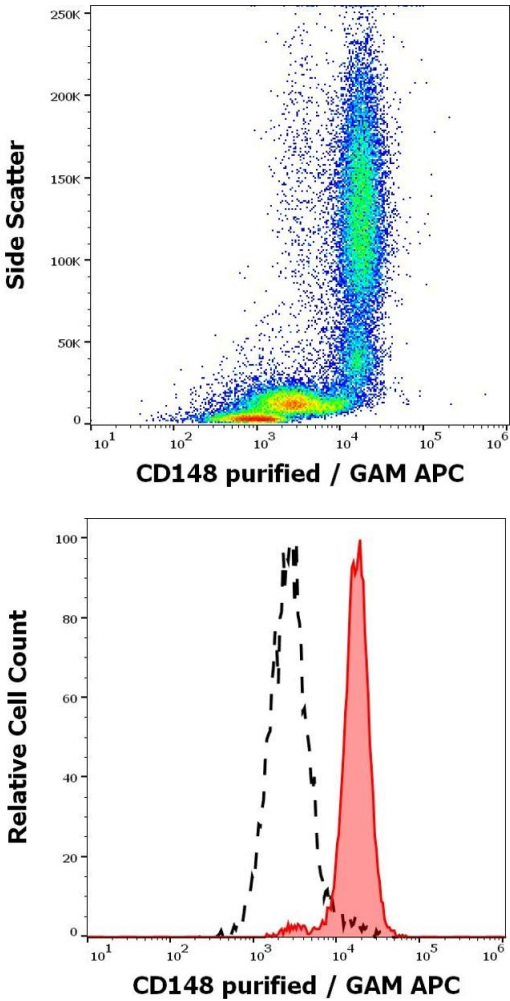
Target:	PTPRJ
Alternative Name:	CD148 ( <a href="#">PTPRJ Products</a> )
Background:	Protein tyrosine phosphatase receptor type J,CD148 (also known as HPTP-eta or DEP-1) is a transmembrane protein tyrosin phosphatase, containing eight fibronectin type III extracellular domains. This protein is known to inhibit transduction of mitogenic signals in non-hematopoietic cells (fibroblasts, epithelial cells), and signal transduction downstream of T cell receptor, however, it also augments immunoreceptor signaling in B cells and macrophages via dephosphorylating C-terminal tyrosine of Src-family tyrosine kinases. CD148 expression increases after in vitro activation of peripheral blood leucocytes. It can be also used as marker of the most mature human thymocytes, and leukemic cells corresponding to this stadium of thymocyte differentiation. In contrast, in mice the CD148 expression sharply drops through the double positive stage to the single positive thymocytes.,HPTP-eta, DEP-1, PTPRJ, DEP1, SCC1, HPTPeta, R-PTP-ETA
Gene ID:	5795
UniProt:	<a href="#">Q12913</a>
Pathways:	<a href="#">EGFR Signaling Pathway</a> , <a href="#">Platelet-derived growth Factor Receptor Signaling</a>

## Application Details

Application Notes:	Flow cytometry: Recommended dilution: 1-5 µg/mL.
Restrictions:	For Research Use only

## Handling

Concentration:	1 mg/mL
Buffer:	Phosphate buffered saline (PBS), pH 7.4, 15 mM sodium azide
Preservative:	Sodium azide
Precaution of Use:	This product contains Sodium azide: a POISONOUS AND HAZARDOUS SUBSTANCE which should be handled by trained staff only.
Handling Advice:	<b>Do not freeze.</b>
Storage:	4 °C
Storage Comment:	Store at 2-8°C. Do not freeze.



### Flow Cytometry

**Image 1.** Flow cytometry surface staining pattern of human peripheral whole blood stained using anti-human CD148 (MEM-CD148/05) purified antibody (concentration in sample 2 µg/mL, GAM APC).

### Flow Cytometry

**Image 2.** Separation of human neutrophil granulocytes (red-filled) from lymphocytes (black-dashed) in flow cytometry analysis (surface staining) of human peripheral whole blood stained using anti-human CD148 (MEM-CD148/05) purified antibody (concentration in sample 2 µg/mL, GAM APC).