



[Go to Product page](#)

Datasheet for ABIN1043548

Maltose Binding Protein Protein (MBP)

1 Image

Overview

Quantity:	5 mg
Target:	Maltose Binding Protein (MBP)
Reactivity:	Please inquire
Host:	Please inquire
Protein Type:	Recombinant
Application:	Western Blotting (WB)

Product Details

Characteristics:	Concentration Definition: by UV absorbance at 280 nm
Sterility:	Sterile filtered

Target Details

Target:	Maltose Binding Protein (MBP)
Alternative Name:	Maltose Binding Protein (MBP Products)

Background: Maltose-Binding Protein (MBP) is a part of the maltose/maltodextrin system of Escherichia coli, which is responsible for the uptake and efficient catabolism of maltodextrins. It is a complex regulatory and transport system involving many proteins and protein complexes. MBP has an approximate molecular mass of 42.5 kilodaltons. MBP is used to increase the solubility of recombinant proteins expressed in E. coli. In these systems, the protein of interest is often expressed as a MBP-fusion protein, preventing aggregation of the protein of interest.

Synonyms: MBP, Maltose Binding Protein

Application Details

Application Notes: Maltose-Binding Protein is suitable for use as a control in many assays including affinity purification, western blot and other biological assays. Optimal concentration should be determined by the researcher.

Restrictions: For Research Use only

Handling

Format: Liquid

Concentration: 5.0 mg/mL

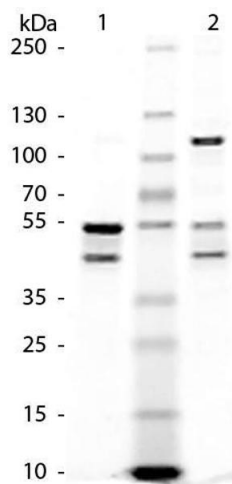
Buffer: 0.02 M Potassium Phosphate, 0.15 M Sodium Chloride, pH 7.2

Preservative: Sodium azide

Precaution of Use: This product contains sodium azide: a POISONOUS AND HAZARDOUS SUBSTANCE which should be handled by trained staff only.

Storage: -20 °C

Validation report #104424 for Immunohistochemistry (IHC)



SDS-PAGE

Image 1. SDS-Page of Maltose Binding Protein (MBP) Control Protein. Lane 1: Maltose Binding Protein – Reduced. Lane 2: Maltose Binding Protein – Non-Reduced. Load: 1.0 µg per lane.