

Datasheet for ABIN1043732  
**anti-His Tag antibody**



[Go to Product page](#)

**3** Images

## Overview

Quantity:	1 mg
Target:	His Tag
Reactivity:	Please inquire
Host:	Mouse
Clonality:	Monoclonal
Application:	Western Blotting (WB), ELISA, Immunohistochemistry (IHC)

## Product Details

Purpose:	6X His Tag Antibody
Immunogen:	Immunogen: 6X HIS antibody was produced in mice by repeated immunizations with 6X His epitope tag peptide H-H-H-H-H-H conjugated to KLH using maleimide. Immunogen Type: Conjugated Peptide
Sequence:	HHHHHH
Clone:	33D10-D2-G8
Isotype:	IgG1 kappa
Cross-Reactivity (Details):	This protein-A purified antibody is directed against the 6X His motif and is useful in determining its presence in various assays. This monoclonal anti-6X His tag antibody detects over-expressed proteins containing the 6X His epitope tag.
Characteristics:	Synonyms: mouse anti-6X His Tag Antibody, anti-HIS, HIS Antibody, 6X His Tag Antibody, HHHHHH epitope tag antibody
Purification:	Protein A purified

## Product Details

---

Sterility: Sterile filtered

## Target Details

---

Target: His Tag

Alternative Name: 6X His ([His Tag Products](#))

Target Type: Tag

Background: Background: Epitope tags are short peptide sequences that are easily recognized by tag-specific antibodies. Due to their small size, epitope tags do not affect the tagged protein's biochemical properties. Most often sequences encoding the epitope tag are included with target DNA at the time of cloning to produce fusion proteins containing the epitope tag sequence. This allows anti-epitope tag antibodies to serve as universal detection reagents for any tag containing protein produced by recombinant means. This means that anti-epitope tag antibodies are a useful alternative to generating specific antibodies to identify, immunoprecipitate or immunoaffinity purify a recombinant protein. The anti-epitope tag antibody is usually functional in a variety of antibody-dependent experimental procedures. Expression vectors producing epitope tag fusion proteins are available for a variety of host expression systems including bacteria, yeast, insect and mammalian cells.

## Application Details

---

Application Notes: Immunohistochemistry Dilution: User Optimized

Application Note: Anti-6X His is optimally suited for monitoring expression of His-tagged fusion proteins. As such, Anti-6X His/6XHIS can be used to identify fusion proteins that contain the 6X His epitope. The antibody recognizes the His tag fused either to the amino- or carboxy- termini of targeted proteins. This antibody has been tested by ELISA and western blotting against both the immunizing peptide and His-containing recombinant proteins. Although not tested, this antibody is likely functional for immunoprecipitation and immunocytochemistry.

Western Blot Dilution: 1:2,000 - 1:10,000

ELISA Dilution: 1:20,000 - 1:100,000

Restrictions: For Research Use only

## Handling

---

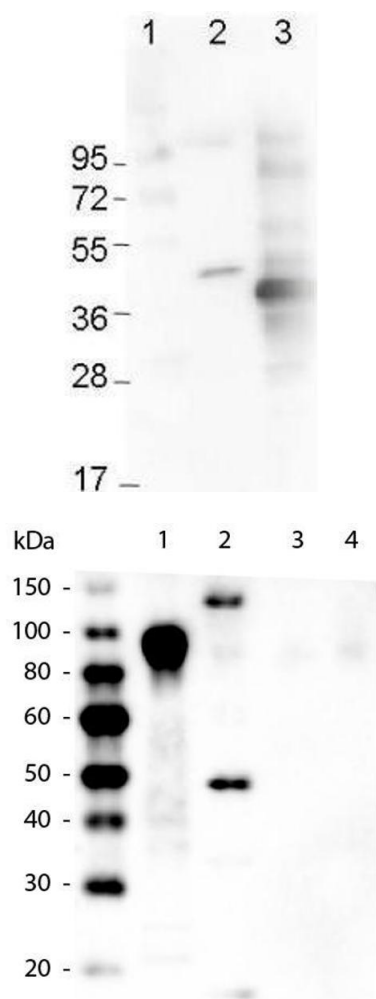
Format: Liquid

Buffer: Buffer: 0.02 M Potassium Phosphate, 0.15 M Sodium Chloride, pH 7.2

Handling

	Stabilizer: None
	Preservative: 0.01 % (w/v) Sodium Azide
Preservative:	Sodium azide
Precaution of Use:	This product contains Sodium azide: a POISONOUS AND HAZARDOUS SUBSTANCE which should be handled by trained staff only.
Storage:	4 °C,-20 °C
Storage Comment:	Store 6X HIS Antibody at -20° C prior to opening. Aliquot contents and freeze at -20° C or below for extended storage. Avoid cycles of freezing and thawing. Centrifuge product if not completely clear after standing at room temperature. This product is stable for several weeks at 4° C as an undiluted liquid. Dilute only prior to immediate use.
Expiry Date:	12 months

Images

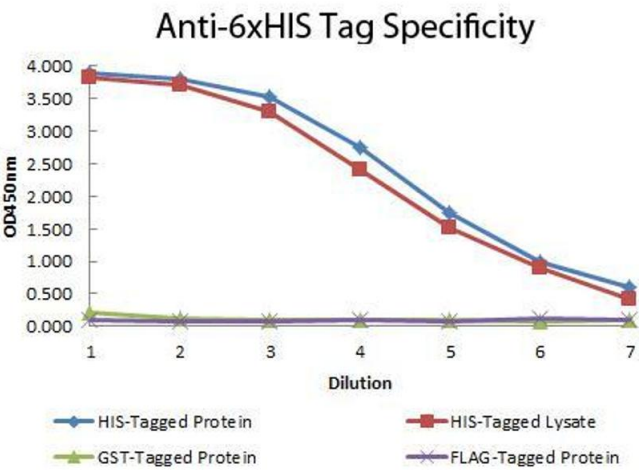


Western Blotting

**Image 1.** Western Blot using Immunochemical's Mouse Anti-6x-His Epitope Tag Monoclonal Antibody showing detection of the 6xHis sequence on N-terminally-tagged (lane 2) and C-terminally-tagged recombinant proteins (lane 3). In lane 1 are molecular weight markers.

Western Blotting

**Image 2.** Western Blot of Mouse anti-6xHIS Tag Antibody. Lane 1: 100ng Purified histidine-tagged recombinant protein. Lane 2: 200ng E. coli cell lysate containing histidine-tagged expression construct. Lane 3: 100ng Purified GST-tagged recombinant protein. Lane 4: 100ng Purified FLAG-tagged recombinant protein. Primary antibody: Mouse anti-6xHIS Tag antibody at 1:5,000 overnight at 4°C. Secondary antibody: Peroxidase mouse secondary antibody at 1:20,000 for 30 min at RT. Block: 5% BLOTTO for 1 hr at RT.



**ELISA**

**Image 3.** ELISA of Mouse anti-6xHIS Tag Antibody. Antigen: HIS-tagged purified protein and E. coli cell lysates expressing HIS-Tagged construct, GST- and RON-tagged purified proteins. Coating amount: 0.15ug per well. Primary antibody: 6xHIS Tag antibody at 100ug/mL. Dilution series: 2-fold. Mid-point concentration: 200ng/mL. Secondary antibody: Peroxidase mouse secondary antibody at 1:10,000. Substrate: TMB .