



Datasheet for ABIN1043741

anti-BIN3 antibody



[Go to Product page](#)

2 Images

1 Publication

Overview

Quantity:	100 µg
Target:	BIN3
Reactivity:	Human, Mouse
Host:	Mouse
Clonality:	Monoclonal
Conjugate:	This BIN3 antibody is un-conjugated
Application:	Western Blotting (WB), ELISA

Product Details

Immunogen:	Anti-BIN3 (MOUSE) Monoclonal Antibody was produced in mouse by repeated immunizations with a GST tagged full length human BIN3 protein followed by hybridoma development. Immunogen Type: RecombinantProtein
Clone:	3A4
Isotype:	IgG1
Specificity:	Anti-BIN3 was purified from clarified mouse ascetic fluid by Protein A chromatography followed by extensive dialysis against the buffer stated above. BIN3 antibody is specific for human BIN3 protein. A BLAST analysis was used to suggest cross-reactivity with BIN3 from human and mouse sources based on 100% homology with the immunizing sequence. Cross-reactivity with BIN3 from other sources has not been determined.
Characteristics:	BIN-3 encodes an evolutionarily conserved and ubiquitously expressed member of the BAR superfamily of curved membrane and GTPase-binding proteins implicated in signal

Product Details

transduction and vesicular trafficking. In humans, Bin3 maps to chromosome 8p21.3, a region widely implicated in cancer suppression that is often deleted in non-Hodgkin's lymphomas and various epithelial tumors. Study in mouse suggests that homozygous inactivation of Bin3 causes cataracts and an increased susceptibility to lymphomas during aging.

Sterility: Sterile filtered

Target Details

Target: BIN3

Alternative Name: BIN3 ([BIN3 Products](#))

Background: BIN-3 encodes an evolutionarily conserved and ubiquitously expressed member of the BAR superfamily of curved membrane and GTPase-binding proteins implicated in signal transduction and vesicular trafficking. In humans, Bin3 maps to chromosome 8p21.3, a region widely implicated in cancer suppression that is often deleted in non-Hodgkin's lymphomas and various epithelial tumors. Study in mouse suggests that homozygous inactivation of Bin3 causes cataracts and an increased susceptibility to lymphomas during aging.
Synonyms: Bridging integrator 3, BIN-3, BIN 3, BIN3 antibody, anti-BIN3 antibody

Gene ID: 55909

NCBI Accession: [NP_061158](#)

UniProt: [Q9NQY0](#)

Application Details

Application Notes: Anti-BIN3 antibody has been tested for use in ELISA, Western Blot, and IP. Specific conditions for reactivity should be optimized by the end user.

Comment: Gene Name: BIN3

Restrictions: For Research Use only

Handling

Format: Liquid

Concentration: 1.0 mg/mL

Buffer: 0.02 M Potassium Phosphate, 0.15 M Sodium Chloride, pH 7.2

Preservative: Sodium azide

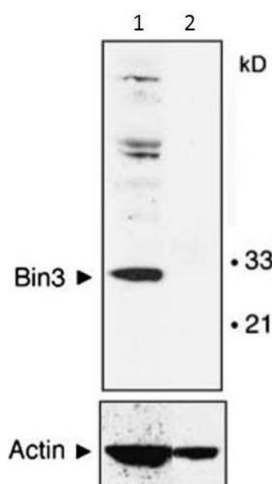
Handling

Precaution of Use:	This product contains sodium azide: a POISONOUS AND HAZARDOUS SUBSTANCE which should be handled by trained staff only.
Storage:	4 °C/-20 °C
Storage Comment:	Store vial at 4 °C prior to restoration. For extended storage aliquot contents and freeze at -20 °C or below. Avoid cycles of freezing and thawing. Centrifuge product if not completely clear after standing at room temperature. This product is stable for several weeks at 4 °C as an undiluted liquid. Dilute only prior to immediate use. Expiration date is one (1) year from date of opening.
Expiry Date:	12 months

Publications

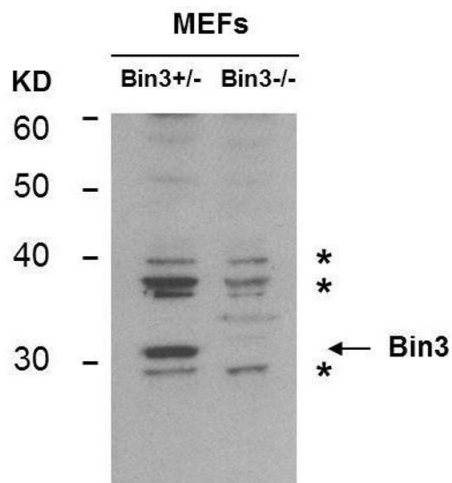
Product cited in:	Purkey, Woolfrey, Crosby, Stich, Chick, Aoto, DellAcqua: "AKAP150 Palmitoylation Regulates Synaptic Incorporation of Ca ²⁺ -Permeable AMPA Receptors to Control LTP." in: Cell reports , Vol. 25, Issue 4, pp. 974-987.e4, (2018) (PubMed).
-------------------	---

Validation report #104424 for Immunohistochemistry (IHC)



Western Blotting

Image 1. Western Blot of Mouse Anti-BIN3 antibody. Lane 1: MEF cells wild type. Lane 2: MEF cells null mice. Load: 35 µg per lane. Primary antibody: BIN3 antibody overnight at 4°C. Secondary antibody: mouse secondary antibody for 45 min at RT. Block: 5% BLOTTO overnight at 4°C. Predicted/Observed size: 29.7 kDa, 30 kDa for BIN-3. Other band(s): non-specific.



Western Blotting

Image 2. Western Blot of Mouse anti-BIN3 antibody. Lane 1: MEF lysate BIN3 +/- . Lane 2: MEF lysate BIN3 -/-. Load: 35 µg per lane. Primary antibody: BIN-3 antibody at 1:400 for overnight at 4°C. Secondary antibody: mouse secondary antibody at 1:10,000 for 45 min at RT. Block: 5% BLOTTO overnight at 4°C. Predicted/Observed size: 29.7 kDa, 31 kDa for BIN 3. Other band(s): * non-specifics.