

Datasheet for ABIN1043806  
**anti-CCL20 antibody (Biotin)**



[Go to Product page](#)

1 Image

1 Publication

## Overview

Quantity:	100 µg
Target:	CCL20
Reactivity:	Human
Host:	Rabbit
Clonality:	Polyclonal
Conjugate:	This CCL20 antibody is conjugated to Biotin
Application:	Western Blotting (WB), Immunohistochemistry (IHC), ELISA

## Product Details

Purpose:	MIP-3 alpha Antibody Biotin Conjugated
Immunogen:	Immunogen: MIP-3 alpha Antibody Biotin Conjugated was prepared from whole rabbit serum produced by repeated immunizations with full length recombinant human MIP-3alpha protein. Immunogen Type: Recombinant Protein
Isotype:	IgG
Cross-Reactivity (Details):	In ELISA and other immunoreactive assays, this antibody will recognize both native and recombinant human MIP-3α in cell supernatants and certain body fluids.
Characteristics:	Synonyms: rabbit anti-MIP-3 alpha Antibody Biotin Conjugated, rabbit anti-MIP-3α biotin Conjugated Antibody, MIP-3α , CCL20, C-C motif chemokine 20, small-inducible cytokine A20, macrophage inflammatory protein 3 alpha, MIP-3-alpha, liver and activation-regulated chemokine, CC chemokine LARC and beta chemokine exodus-1
Purification:	Human MIP-3 alpha Antibody Biotin Conjugated was heated to 56°C for 30 minutes.

## Target Details

Target:	CCL20
Alternative Name:	CCL20 ( <a href="#">CCL20 Products</a> )
Background:	<p>Background: MIP-3α (also known as C-C motif chemokine 20, small-inducible cytokine A20, macrophage inflammatory protein 3 alpha, MIP-3-alpha, liver and activation-regulated chemokine, CC chemokine LARC and beta chemokine exodus-1) is a chemotactic factor that attracts lymphocytes and, slightly, neutrophils, but not monocytes. MIP-3α inhibits proliferation of myeloid progenitors in colony formation assays and may be involved in formation and function of the mucosal lymphoid tissues by attracting lymphocytes and dendritic cells towards epithelial cells. C-terminal processed forms have been shown to be equally chemotactically active for leukocytes. MIP-3α also possesses antibacterial activity against E.coli and S.aureus. MIP-3α is a secreted protein that is expressed predominantly in the liver, lymph nodes, appendix, peripheral blood lymphocytes, and fetal lung. Low levels of expression are also seen in thymus, prostate, testis, small intestine and colon. C-terminal processed forms which lack 1, 3 or 6 amino acids are produced by proteolytic cleavage after secretion from peripheral blood monocytes. MIP-1 alpha Antibody Biotin Conjugated is useful for researchers interested in Cancer, Cell Biology and Immunology Research.</p>
Gene ID:	6364, 4759076
UniProt:	<a href="#">P78556</a>
Pathways:	<a href="#">The Global Phosphorylation Landscape of SARS-CoV-2 Infection</a>

## Application Details

Application Notes:	<p>Immunohistochemistry Dilution: 1:1,000-1:5,000</p> <p>Application Note: This purified antibody has been tested in western blotting and is suitable in ELISA. By western blot a band approximately 11 kDa in size corresponding to human MIP-3α protein is expected in the appropriate cell lysate or extract. Specific conditions for reactivity should be optimized by the end user.</p> <p>Western Blot Dilution: 1:2,000-1:10,000</p> <p>ELISA Dilution: 1:20,000 - 1:100,000</p>
Restrictions:	For Research Use only

## Handling

Format:	Lyophilized
---------	-------------

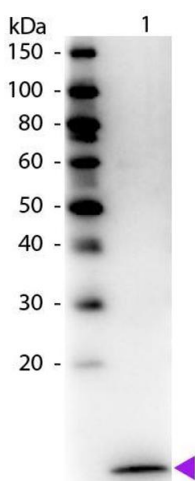
## Handling

Reconstitution:	Reconstitution Volume: 100 µL Reconstitution Buffer: Restore with deionized water (or equivalent)
Buffer:	Buffer: 0.02 M Potassium Phosphate, 0.15 M Sodium Chloride, pH 7.2 Stabilizer: 10 mg/mL Bovine Serum Albumin (BSA) - Immunoglobulin and Protease free Preservative: 0.01 % (w/v) Sodium Azide
Preservative:	Sodium azide
Precaution of Use:	This product contains Sodium azide: a POISONOUS AND HAZARDOUS SUBSTANCE which should be handled by trained staff only.
Storage:	4 °C, -20 °C
Storage Comment:	Store MIP-3 alpha Antibody Biotin Conjugated at 4° C prior to restoration. For extended storage aliquot contents and freeze at -20° C or below. Avoid cycles of freezing and thawing. Centrifuge product if not completely clear after standing at room temperature. This product is stable for several weeks at 4° C as an undiluted liquid. Dilute only prior to immediate use.
Expiry Date:	12 months

## Publications

Product cited in:	Lisignoli, Manferdini, Codeluppi, Piacentini, Grassi, Cattini, Filardo, Facchini: "CCL20/CCR6 chemokine/receptor expression in bone tissue from osteoarthritis and rheumatoid arthritis patients: different response of osteoblasts in the two groups." in: <b>Journal of cellular physiology</b> , Vol. 221, Issue 1, pp. 154-60, (2009) ( <a href="#">PubMed</a> ).
-------------------	---

## Images



### Western Blotting

**Image 1.** Western Blot of Biotin Conjugated Rabbit Anti-Human MIP-3α Antibody. Lane 1: Human MIP-3α. Lane 2: None. Load: 50 ng per lane. Primary antibody: Human MIP-3 α antibody at 1:1000 for 60 min at RT. Secondary antibody: Peroxidase conjugated Streptavidin secondary antibody at 1:40,000 for 30 min at RT. Block: ABIN925618 for 30 min at RT. Predicted/Observed size: 10 kDa, 10 kDa for Human MIP-3α. Other band(s): None.