



Datasheet for ABIN1043930

Donkey anti-Chicken IgG (Heavy & Light Chain) Antibody (FITC) - Preadsorbed



[Go to Product page](#)

2 Images

Overview

Quantity:	1 mg
Target:	IgG
Binding Specificity:	Heavy & Light Chain
Reactivity:	Chicken
Host:	Donkey
Clonality:	Polyclonal
Conjugate:	FITC
Application:	Flow Cytometry (FACS), FLISA, Fluorescence Microscopy (FM)

Product Details

Immunogen:	Immunogen: Chicken IgG whole molecule
Isotype:	IgG
Specificity:	Assay by immunoelectrophoresis resulted in a single precipitin arc against anti-Donkey Serum, Chicken IgG and Chicken Serum.
Cross-Reactivity:	Chicken
Characteristics:	This product is designed for immunofluorescence microscopy, fluorescence based plate assays (FLISA) and fluorescent western blotting. This product is also suitable for multiplex analysis, including multicolor imaging, utilizing various commercial platforms.
Purification:	Preadsorption: immunoaffinity chromatography using Chicken IgG coupled to agarose beads
Labeling Ratio:	3.0

Target Details

Target:	IgG
Abstract:	IgG Products
Target Type:	Antibody
Background:	<p>Synonyms: Donkey anti-Chicken IgG Antibody Fluorescein Conjugation, Donkey anti-Chicken IgG FITC Conjugated Antibody</p> <p>Background: Anti-Chicken IgG Fluorescein Antibody generated in donkey detects chicken IgG. Secreted as part of the adaptive immune response by plasma B cells, immunoglobulin G constitutes 75 % of serum immunoglobulins. Immunoglobulin G binds to viruses, bacteria, as well as fungi and facilitates their destruction or neutralization via agglutination (and thereby immobilizing them), activation of the compliment cascade, and opsinization for phagocytosis. The whole IgG molecule possesses both the F(c) region, recognized by high-affinity Fc receptor proteins, as well as the F(ab) region possessing the epitope-recognition site. Both heavy and light chains of the antibody molecule are present.</p>

Application Details

Application Notes:	<p>Application Note: Suitable for immunomicroscopy and flow cytometry or FACS analysis as well as other antibody based fluorescent assays requiring extremely low background levels, absence of F(c) mediated binding, lot-to-lot consistency, high titer and specificity.</p> <p>FLISA Dilution: 1:10,000 - 1:50,000</p> <p>Flow Cytometry Dilution: 1:500 - 1:2,500</p> <p>IF Microscopy Dilution: 1:1,000 - 1:5,000</p>
Comment:	Excitation/Emission wavelength: 494 nm/514 nm
Restrictions:	For Research Use only

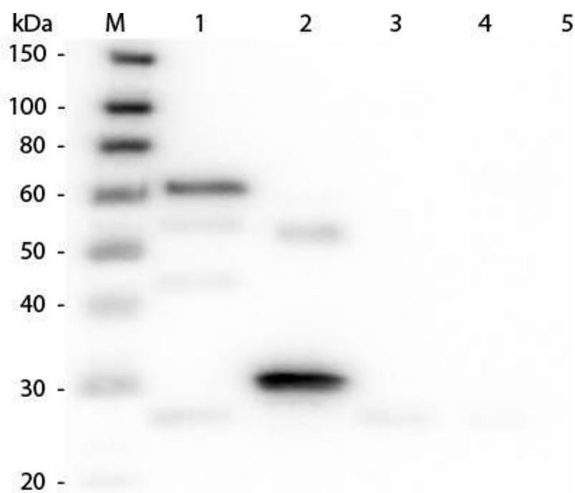
Handling

Format:	Lyophilized
Reconstitution:	<p>Reconstitution Volume: 1.0 mL</p> <p>Reconstitution Buffer: Restore with deionized water (or equivalent)</p>
Concentration:	1 mg/mL
Buffer:	<p>Buffer: 0.02 M Potassium Phosphate, 0.15 M Sodium Chloride, pH 7.2</p> <p>Stabilizer: 10 mg/mL Bovine Serum Albumin (BSA) - Immunoglobulin and Protease free</p> <p>Preservative: 0.01 % (w/v) Sodium Azide</p>

Handling

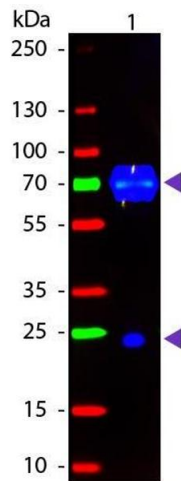
Preservative:	Sodium azide
Precaution of Use:	This product contains Sodium azide: a POISONOUS AND HAZARDOUS SUBSTANCE which should be handled by trained staff only.
Handling Advice:	Product is photosensitive and should be protected from light. Avoid cycles of freezing and thawing. Centrifuge product if not completely clear after standing at room temperature. Dilute only prior to immediate use.
Storage:	RT,4 °C,-20 °C
Storage Comment:	Store vial at 4 °C prior to restoration. For extended storage aliquot contents and freeze at -24 °C or below. This product is stable for several weeks at 4 °C as an undiluted liquid.
Expiry Date:	12 months

Images



Western Blotting

Image 1. Western Blot of Anti-Chicken IgG (H&L) (DONKEY) Antibody (Min X Bv Gt GP Ham Hs Hu Ms Rb Rt & Sh Serum Proteins) . Lane M: 3 µl Molecular Ladder. Lane 1: Chicken IgG whole molecule . Lane 2: Chicken IgG F(c) Fragment . Lane 3: Chicken IgG Fab Fragment . Lane 4: Chicken IgM Whole Molecule . Lane 5: Chicken Serum . All samples were reduced. Load: 50 ng per lane. Block: ABIN925618 for 30 min at RT. Primary Antibody: Anti-Chicken IgG (H&L) (DONKEY) Antibody (Min X Bv Gt GP Ham Hs Hu Ms Rb Rt & Sh Serum Proteins) 1:3,000 for 60 min at RT. Secondary antibody: Anti-Donkey IgG (GOAT) Peroxidase Conjugated Antibody 1:40,000 in ABIN925618 for 30 min at RT. Predicted/Observed Size: 25 and 72 kDa for Chicken IgG and Serum, 25 kDa for F(c) and Fab, 75 kDa for IgM. Chicken F(c) migrates slightly higher.



Western Blotting

Image 2. Western Blot of Fluorescein conjugated Donkey anti-Chicken IgG Pre-adsorbed secondary antibody. Lane 1: Chicken IgG. Lane 2: none. Load: 50 ng per lane. Primary antibody: none. Secondary antibody: Fluorescein donkey secondary antibody at 1:1,000 for 60 min at RT. Block: ABIN925618 for 30 min at RT. Predicted/Observed size: 25 & 72 kDa, 25 & 72 kDa for Chicken IgG. Other band(s): none.