

Datasheet for ABIN1043945

**Rabbit anti-Goat IgG (Heavy & Light Chain) Antibody (Atto 550)
- Preadsorbed**[Go to Product page](#)**3** Images

Overview

Quantity:	100 µg
Target:	IgG
Binding Specificity:	Heavy & Light Chain
Reactivity:	Goat
Host:	Rabbit
Clonality:	Polyclonal
Conjugate:	Atto 550
Application:	Western Blotting (WB), FLISA, Fluorescence Microscopy (FM)

Product Details

Immunogen:	Immunogen: Goat IgG whole molecule
Isotype:	IgG
Specificity:	Assay by immunoelectrophoresis resulted in a single precipitin arc against anti-Rabbit Serum, Goat IgG and Goat Serum.
Characteristics:	<p>Anti-Goat IgG (H&L) conjugated by ATTO 550 is designed for STED microscopy, FRET, immunofluorescence microscopy, fluorescence based plate assays (FLISA) and fluorescent western blotting. This product is also suitable for multiplex analysis, including multicolor imaging, utilizing various commercial platforms.</p> <p>This product is designed for STED microscopy, FRET, immunofluorescence microscopy, fluorescence based plate assays (FLISA) and fluorescent western blotting. This product is also suitable for multiplex analysis, including multicolor imaging, utilizing various commercial</p>

Product Details

platforms.

Purification: Preadsorption: Solid phase absorption

Labeling Ratio: 1.9

Target Details

Target: IgG

Abstract: [IgG Products](#)

Target Type: Antibody

Background: Synonyms: rabbit anti-Goat IgG ATTO 550 Conjugated Antibody, rabbit anti-Goat IgG Antibody ATTO550 Conjugation

Background: Anti-Goat IgG ATTO dye Antibody generated in rabbit detects goat IgG. Secreted as part of the adaptive immune response by plasma B cells, immunoglobulin G constitutes 75 % of serum immunoglobulins. Immunoglobulin G binds to viruses, bacteria, as well as fungi and facilitates their destruction or neutralization via agglutination (and thereby immobilizing them), activation of the complement cascade, and opsonization for phagocytosis. The whole IgG molecule possesses both the F(c) region, recognized by high-affinity Fc receptor proteins, as well as the F(ab) region possessing the epitope-recognition site. Both heavy and light chains of the antibody molecule are present.

Application Details

Application Notes: Application Note: Anti-Goat IgG (H&L) conjugated by ATTO 550 is designed for STED microscopy, FRET, immunofluorescence microscopy, fluorescence based plate assays (FLISA) and fluorescent western blotting. This product is also suitable for multiplex analysis, including multicolor imaging, utilizing various commercial platforms. The emission spectra for this ATTO conjugate matches the principle output wavelengths of most common fluorescence instrumentation.

FLISA Dilution: >1:20,000

Western Blot Dilution: >1:10,000

IF Microscopy Dilution: >1:5,000

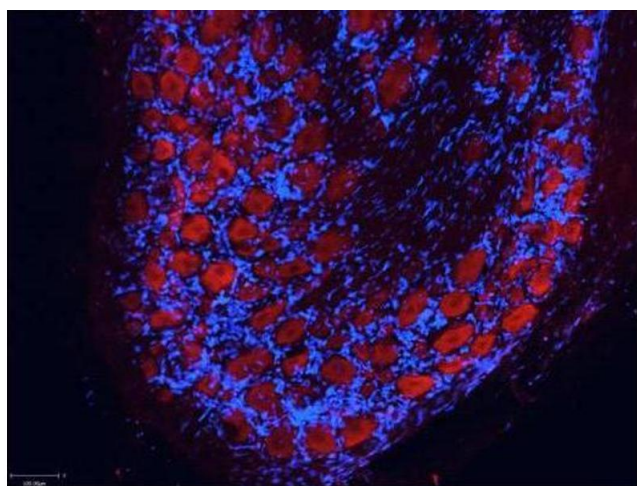
Comment: The emission spectra for this ATTO conjugate matches the principle output wavelengths of most common fluorescence instrumentation.

Restrictions: For Research Use only

Handling

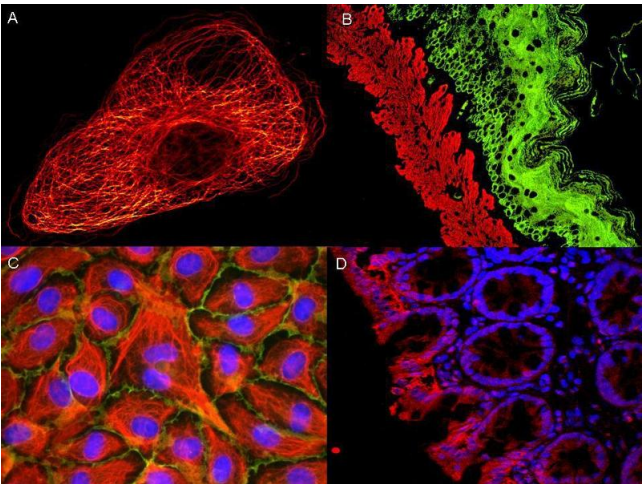
Format:	Lyophilized
Reconstitution:	Reconstitution Volume: 500 µL Reconstitution Buffer: Restore with deionized water (or equivalent)
Concentration:	1.0 mg/mL
Buffer:	Buffer: 0.02 M Potassium Phosphate, 0.15 M Sodium Chloride, pH 7.2 Stabilizer: 10 mg/mL Bovine Serum Albumin (BSA) - Immunoglobulin and Protease free Preservative: 0.01 % (w/v) Sodium Azide
Preservative:	Sodium azide
Precaution of Use:	This product contains Sodium azide: a POISONOUS AND HAZARDOUS SUBSTANCE which should be handled by trained staff only.
Handling Advice:	Avoid cycles of freezing and thawing. Product is photosensitive and should be protected from light.
Storage:	RT, 4 °C, -20 °C
Storage Comment:	Store vial at -20 °C or below prior to opening. Store the vial at -20 °C or below after dilution.
Expiry Date:	12 months

Validation report #102827 for Flow Cytometry (FACS)



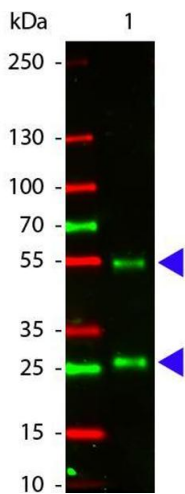
Immunofluorescence

Image 1.



Immunofluorescence

Image 2.



Western Blotting

Image 3. Western Blot of Atto 550 conjugated Rabbit anti-Goat IgG antibody. Lane 1: Goat IgG. Lane 2: none. Load: 50 ng per lane. Primary antibody: none. Secondary antibody: Atto 550 rabbit secondary antibody at 1:1,000 for 60 min at RT. Block: ABIN925618 for 30 min at RT. Predicted/Observed size: 55 kDa, 28 kDa for Goat IgG. Other band(s): none.