

Datasheet for ABIN1043950

Donkey anti-Guinea Pig IgG (Heavy & Light Chain) Antibody (TRITC) - Preadsorbed[Go to Product page](#)**1** Image

Overview

Quantity:	1 mg
Target:	IgG
Binding Specificity:	Heavy & Light Chain
Reactivity:	Guinea Pig
Host:	Donkey
Clonality:	Polyclonal
Conjugate:	TRITC
Application:	Flow Cytometry (FACS), FLISA, Fluorescence Microscopy (FM)

Product Details

Immunogen:	Immunogen: Guinea Pig IgG whole molecule
Isotype:	IgG
Specificity:	Assay by immunoelectrophoresis resulted in a single precipitin arc against anti-Donkey Serum, Guinea Pig IgG and Guinea Pig Serum.
Cross-Reactivity:	Guinea Pig
Characteristics:	This product is designed for immunofluorescence microscopy, fluorescence based plate assays (FLISA) and fluorescent western blotting. This product is also suitable for multiplex analysis, including multicolor imaging, utilizing various commercial platforms.
Purification:	Preadsorption: immunoaffinity chromatography using Guinea Pig IgG coupled to agarose beads

Product Details

Labeling Ratio: 2.4

Target Details

Target: IgG

Abstract: [IgG Products](#)

Target Type: Antibody

Background: Synonyms: Donkey Anti-Guinea Pig IgG Rhodamine Conjugation, Donkey Anti-Guinea Pig IgG TRITC Conjugated

Background: Anti-Guinea Pig IgG Rhodamine Antibody generated in donkey detects guinea pig IgG. Secreted as part of the adaptive immune response by plasma B cells, immunoglobulin G constitutes 75 % of serum immunoglobulins. Immunoglobulin G binds to viruses, bacteria, as well as fungi and facilitates their destruction or neutralization via agglutination (and thereby immobilizing them), activation of the complement cascade, and opsinization for phagocytosis. The whole IgG molecule possesses both the F(c) region, recognized by high-affinity Fc receptor proteins, as well as the F(ab) region possessing the epitope-recognition site. Both heavy and light chains of the antibody molecule are present. Secondary Antibodies are available in a variety of formats and conjugate types. When choosing a secondary antibody product, consideration must be given to species and immunoglobulin specificity, conjugate type, fragment and chain specificity, level of cross-reactivity, and host-species source and fragment composition.

Application Details

Application Notes: Application Note: This product is designed for immunofluorescence microscopy, fluorescence based plate assays (FLISA) and fluorescent western blotting. This product is also suitable for multiplex analysis, including multicolor imaging, utilizing various commercial platforms.

FLISA Dilution: 1:10,000 - 1:50,000

Flow Cytometry Dilution: 1:500 - 1:2,500

IF Microscopy Dilution: 1:1,000 - 1:5,000

Restrictions: For Research Use only

Handling

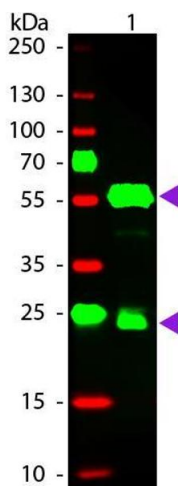
Format: Lyophilized

Reconstitution: Reconstitution Volume: 1.0 mL

Handling

	Reconstitution Buffer: Restore with deionized water (or equivalent)
Concentration:	1.0 mg/mL
Buffer:	Buffer: 0.02 M Potassium Phosphate, 0.15 M Sodium Chloride, pH 7.2 Stabilizer: 10 mg/mL Bovine Serum Albumin (BSA) - Immunoglobulin and Protease free Preservative: 0.01 % (w/v) Sodium Azide
Preservative:	Sodium azide
Precaution of Use:	This product contains Sodium azide: a POISONOUS AND HAZARDOUS SUBSTANCE which should be handled by trained staff only.
Handling Advice:	Avoid cycles of freezing and thawing. Product is photosensitive and should be protected from light. Centrifuge product if not completely clear after standing at room temperature.
Storage:	RT, 4 °C, -20 °C
Storage Comment:	Store vial at 4 °C prior to restoration. For extended storage aliquot contents and freeze at -24 °C or below. This product is stable for several weeks at 4 °C as an undiluted liquid.
Expiry Date:	12 months

Images



Western Blotting

Image 1. Western Blot of Donkey anti-Guinea Pig IgG Pre-Absorbed Rhodamine Conjugated Secondary Antibody. Lane 1: Guinea Pig IgG. Lane 2: None. Load: 50 ng per lane. Primary antibody: None. Secondary antibody: Rhodamine donkey secondary antibody at 1:1,000 for 60 min at RT. Block: ABIN925618 for 30 min at RT. Predicted/Observed size: 25 & 55 kDa, 25 & 55 kDa for Guinea Pig IgG. Other band(s): None.